

norvil

siente tu uniforme



Beauty *and* Healthcare

CATALOGUE 2021/22



We are happy to show you our new Beauty and Healthcare collection made up of comfortable and elastic clothes with the innovative design that always accompanies and characterizes Norvil uniforms. In this collection we have worked as basic concept the comfort in the daily work. It is recommended for the personnel in the healthcare, beauty, spa & wellness, cleaning sectors, among others. Because we don't only want all of them to wear our uniforms, we also want them to **FEEL** them.



TABLE OF CONTENTS

1	PREMIUM NATURA® STRETCH COLLECTION .. 1 - 12			
	Tunics	5 - 9		
	T-Shirts	10 - 11		
	Trousers	8, 12		
	Caps	10		
2	NATURA®	13 - 20		
	Tunics	15 - 16		
	T-Shirts	17		
	Trousers	18		
	Polo-Shirts	19 - 20		
3	TWILLS	21 - 56		
	STRETCH COTTON TWILL	21 - 27		
	Coats	23 - 24		
	Tunics	25 - 26		
	Trousers	27		
	TWILL AND RIB-KNIT FABRIC	28 - 37		
	Coats	29 - 30		
	Tunics	31 - 37		
	TWILLS	21 - 56		
	SUSTAINABLE TWILL	38 - 45		
	Coats	42		
	Tunics	39, 40, 41, 43 y 44		
	Trousers	45		
	TWILL / INDANTHRENE® COLORS	46 - 56		
	Coats	47 - 48		
	Tunics	49, 50, 52, 54 y 55		
	Trousers	53, 56		
	Caps	47, 51		
4	ANTIBACTERIAL MICROFIBER	57- 64		
	Tunics	58 - 63		
	Trousers	64		
5	STRETCH MICROFIBER	65 - 74		
	Kimono & Coats	67 - 73		
	Trousers	74		

TABLE OF CONTENTS

6 OTHER TEXTURES 75 - 78

 PIQUE 75 - 76

 SEERSUCKER 77

 COTTON-RICH POPLIN 78

7 HYGIENIC PRODUCTS 79 - 85

 Gowns 79 - 83

 Caps, Sleeves and Shoe covers 84

8 SIZE GUIDE 86 - 91

9 MODEL LIST 92 - 94



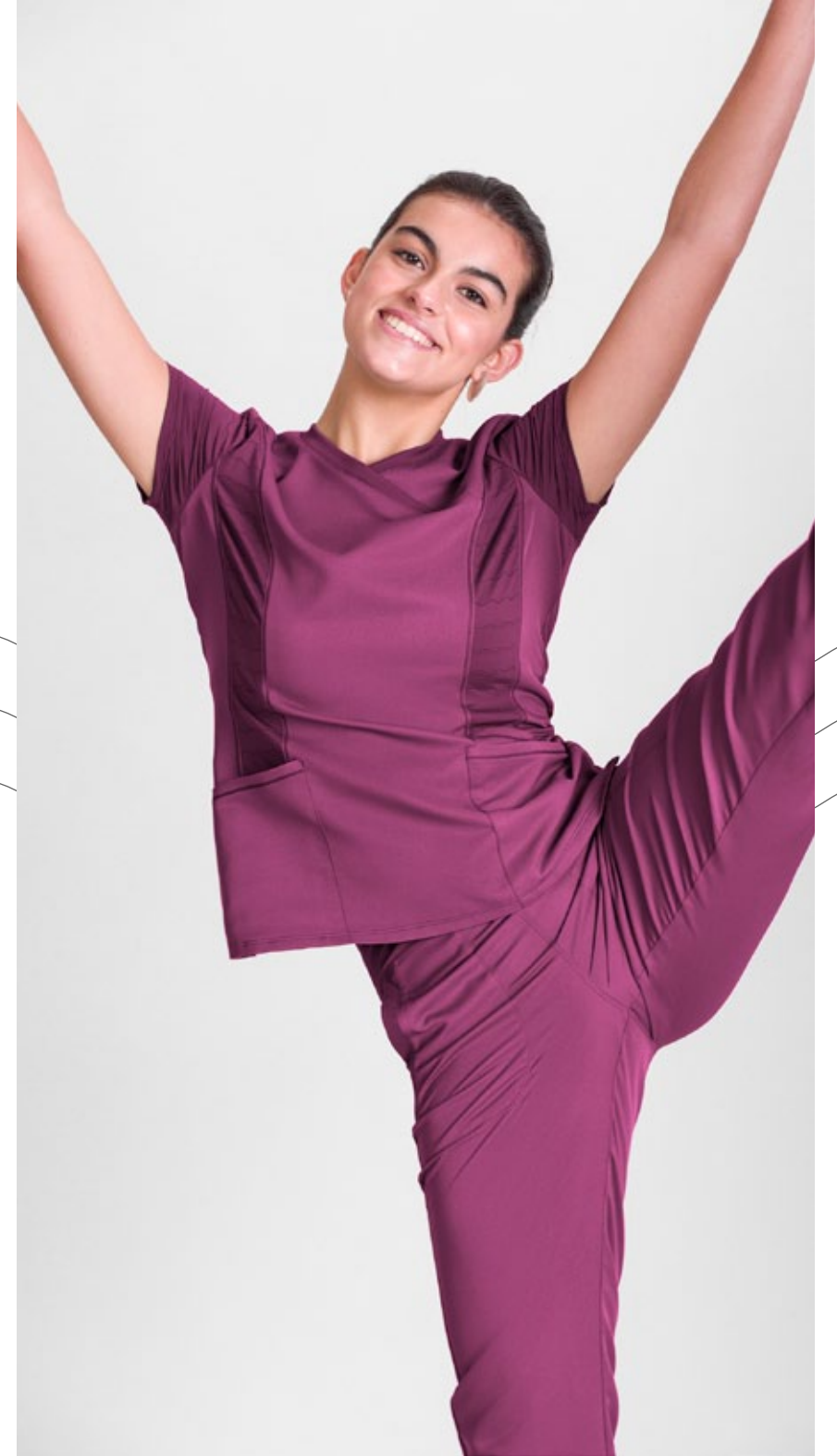
norvil

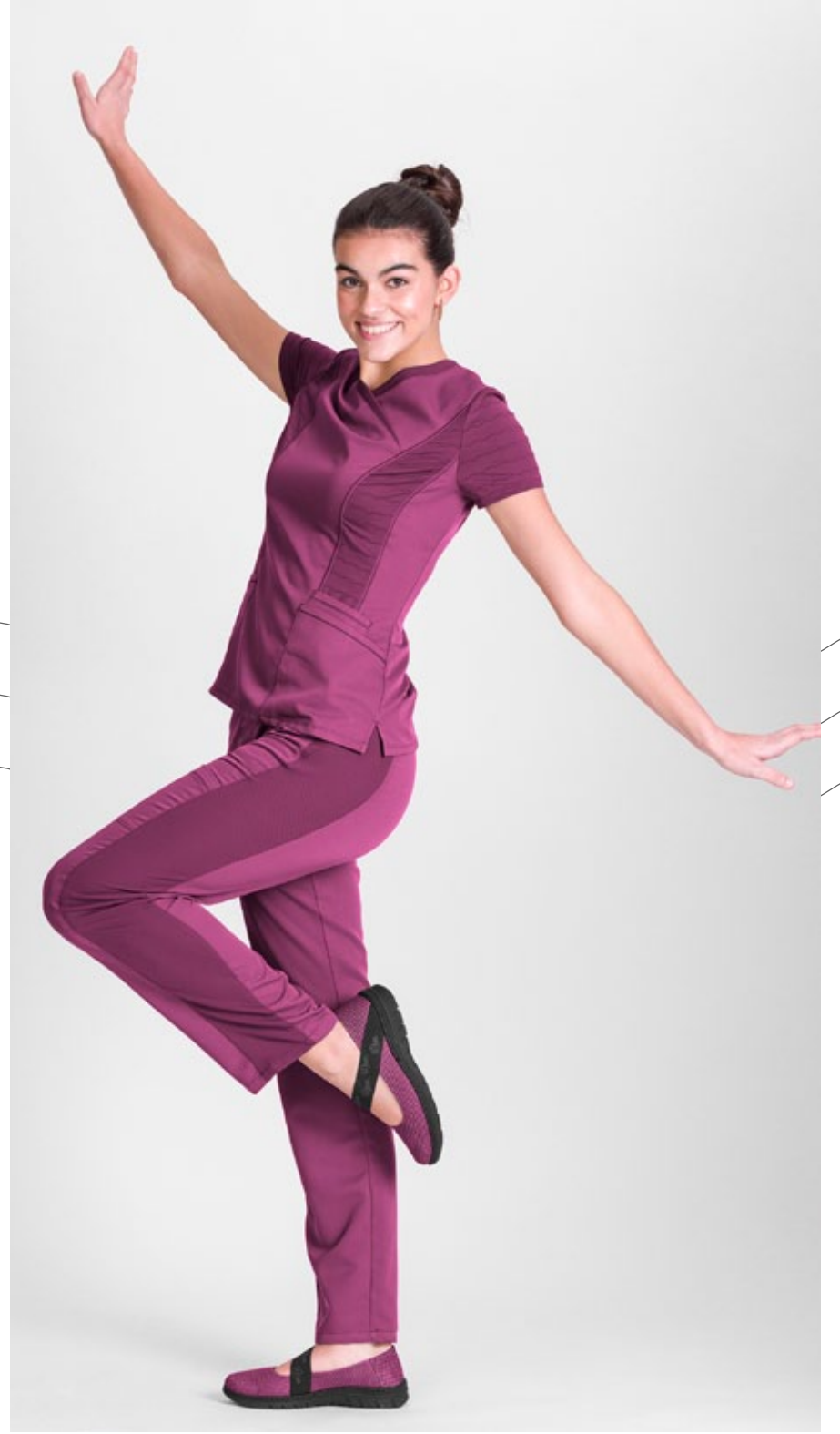
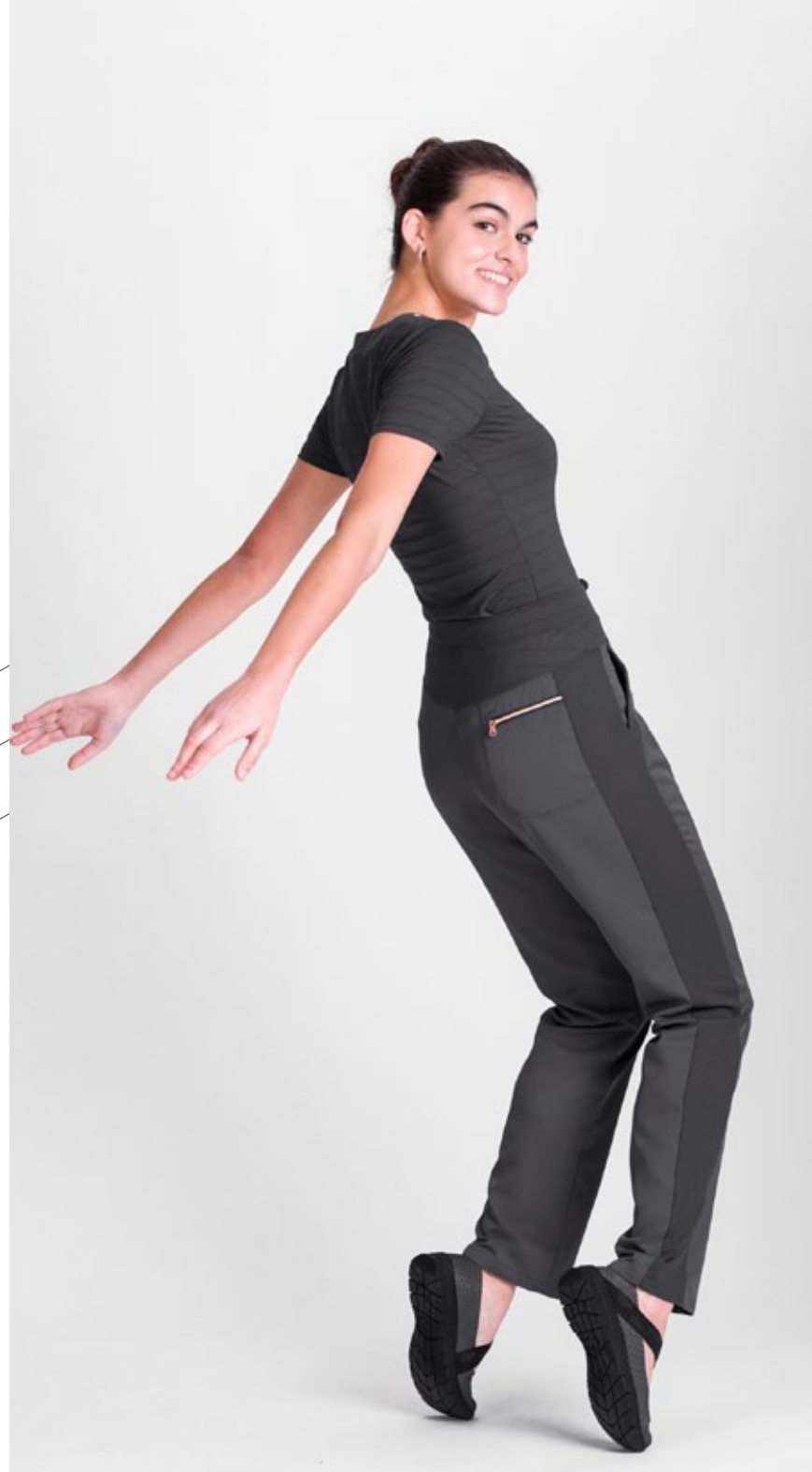
**Beauty
and
Healthcare**



1

**PREMIUM
NATURA® STRETCH
COLLECTION**

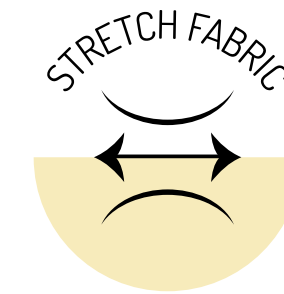
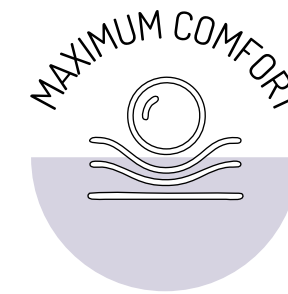






PREMIUM NATURA® STRETCH COLLECTION

Our Natura® stretch fabric makes moisture rapidly evaporate by concentrating it in its outer side, it is washable up to 60 degrees and it does not require ironing. The stretch fiber offers a comfortable wear and allows freedom of movement.



Natura® stretch composition:
100% Natura® stretch Polyester
Rib knit fabric and Fancy fabric:
95% Polyamide - 5% Elastane

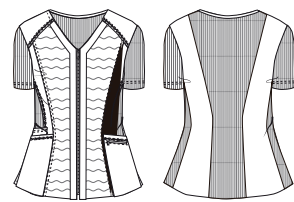
Beauty
and
Healthcare



norvil



1146 WOMEN'S S/S TUNIC V COLLAR WITH ZIPPER
PREMIUM NATURA® STRETCH

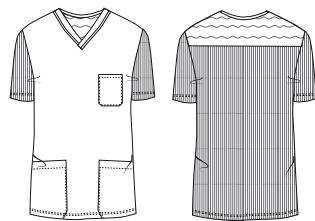


- 013 Gray
- 080 Fuchsia
- 141 Seaport

SIZES: XS - 2XL

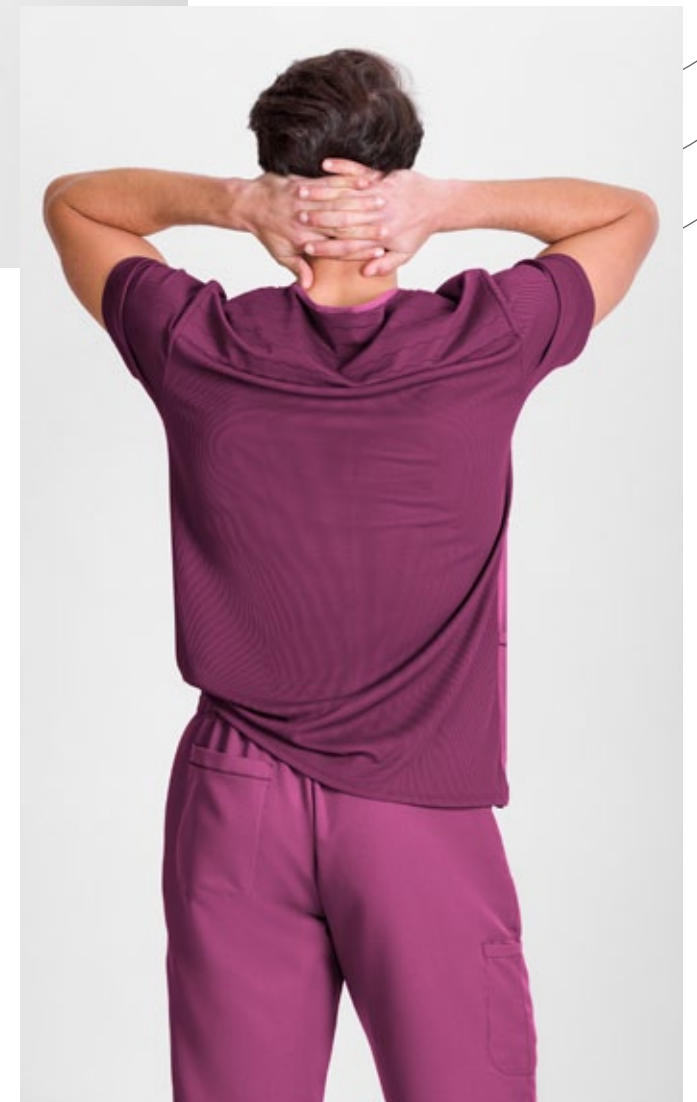
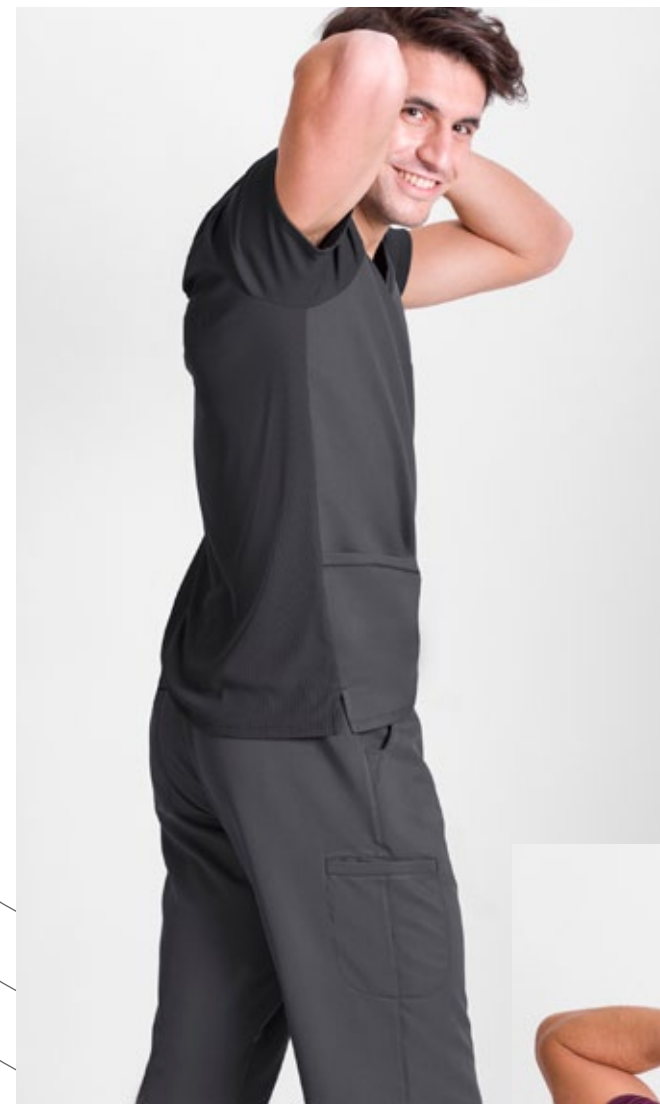
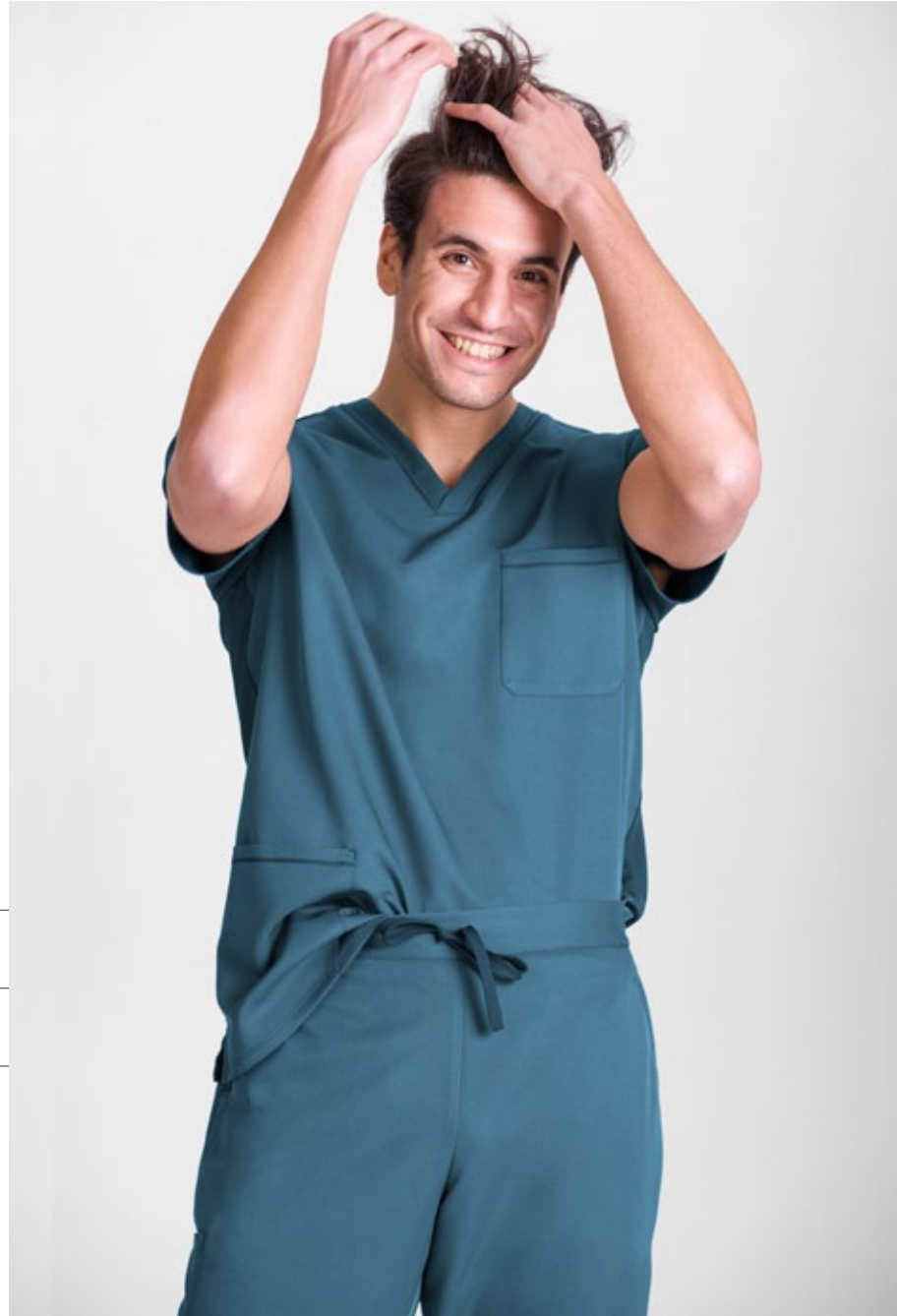


1149 UNISEX S/S TUNIC V COLLAR
PREMIUM NATURA® STRETCH

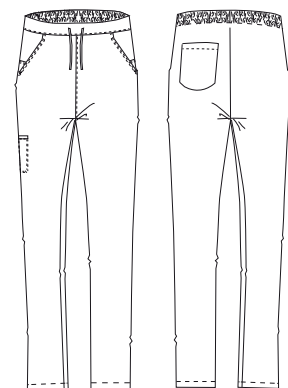


- 013 Gray
- 080 Fuchsia
- 141 Seaport

SIZES: **XS - 2XL**

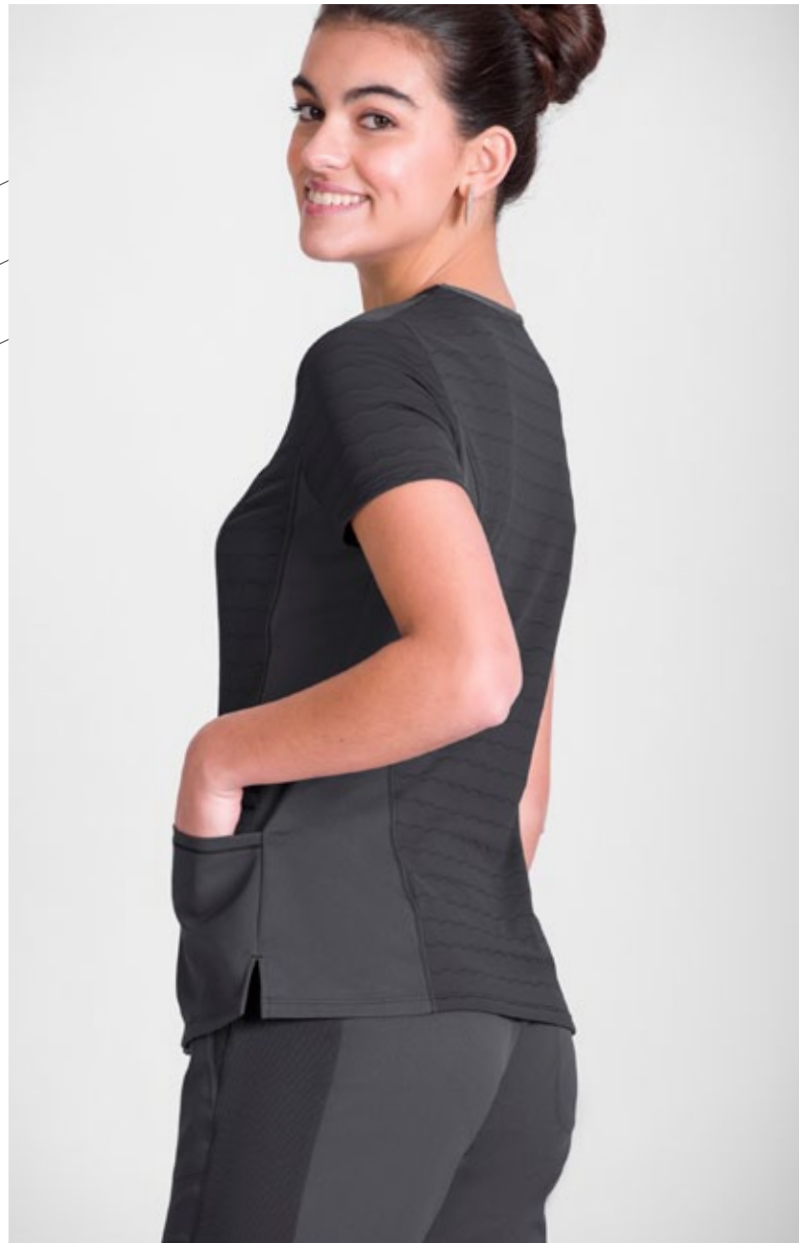


1718 UNISEX SCRUB TROUSERS
PREMIUM NATURA® STRETCH



- 013 Gray
- 080 Fuchsia
- 141 Seaport

SIZES: XS - 2XL

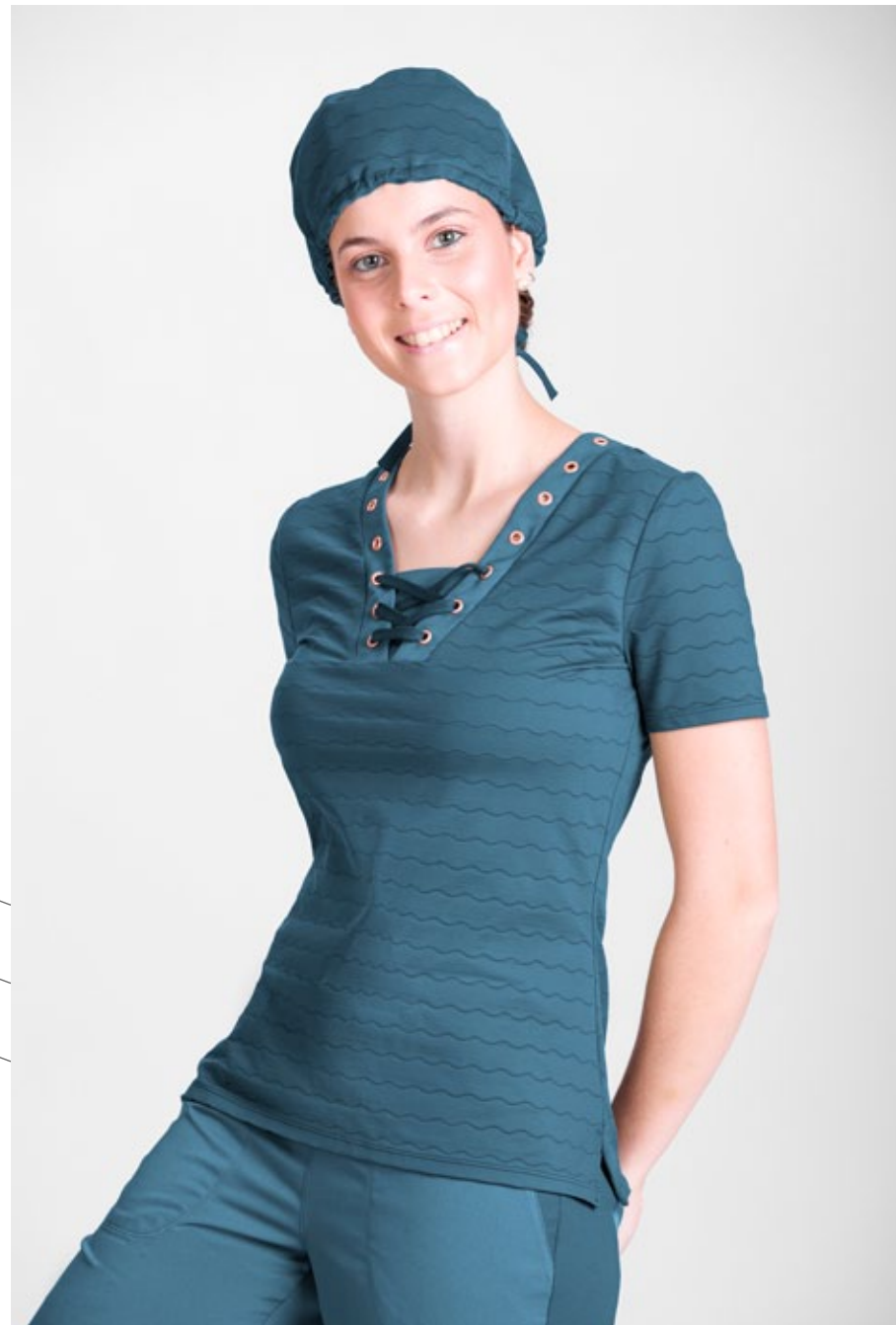


1147 WOMEN'S SHORT SLEEVE TUNIC V COLLAR
PREMIUM NATURA® STRETCH

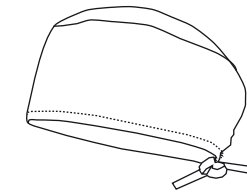


- 013 Gray
- 080 Fuchsia
- 141 Seaport

SIZES: XS - 2XL



593 REVERSIBLE SCRUB CAP
PREMIUM NATURA® STRETCH



- 013 Gray
- 080 Fuchsia
- 141 Seaport

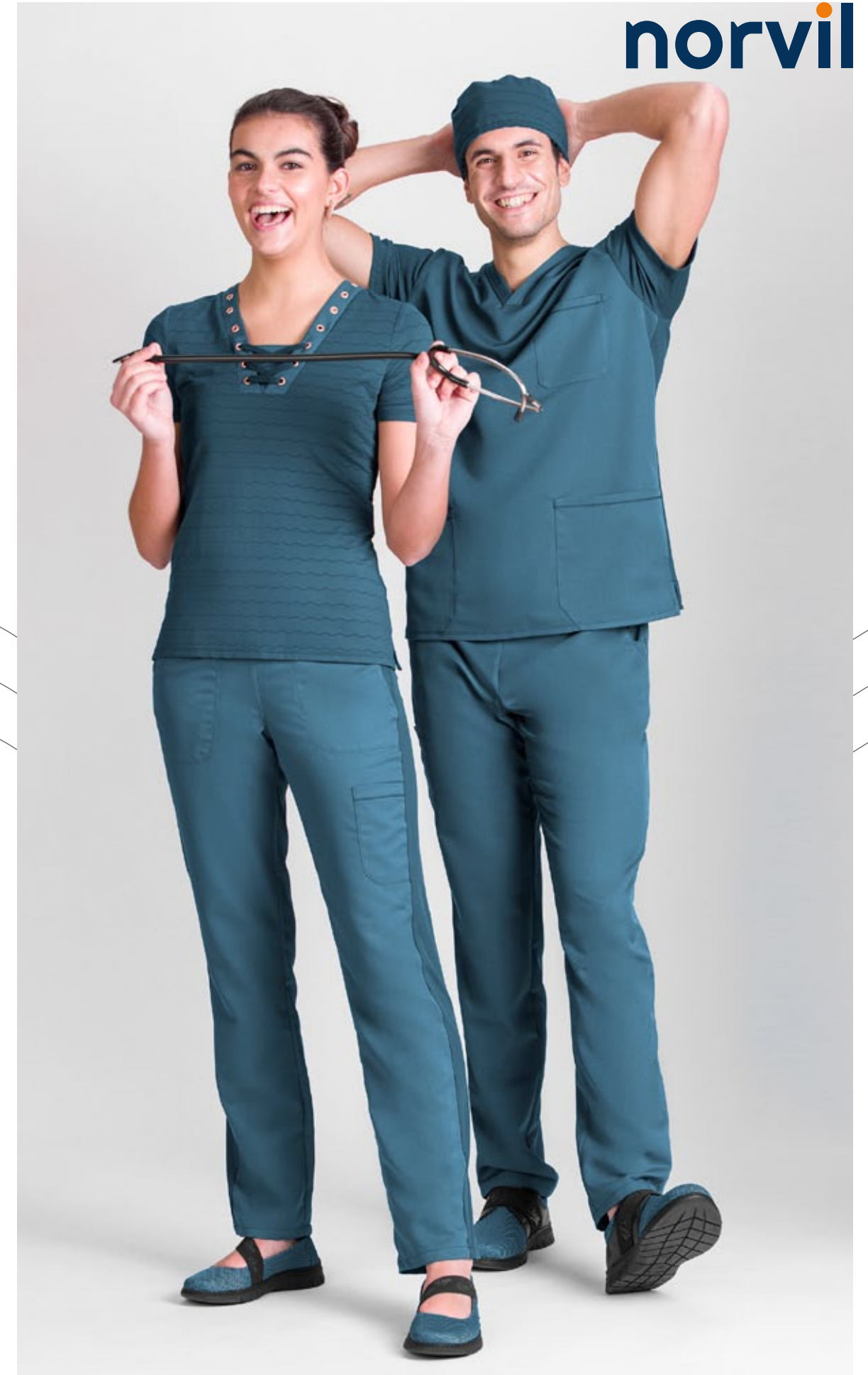
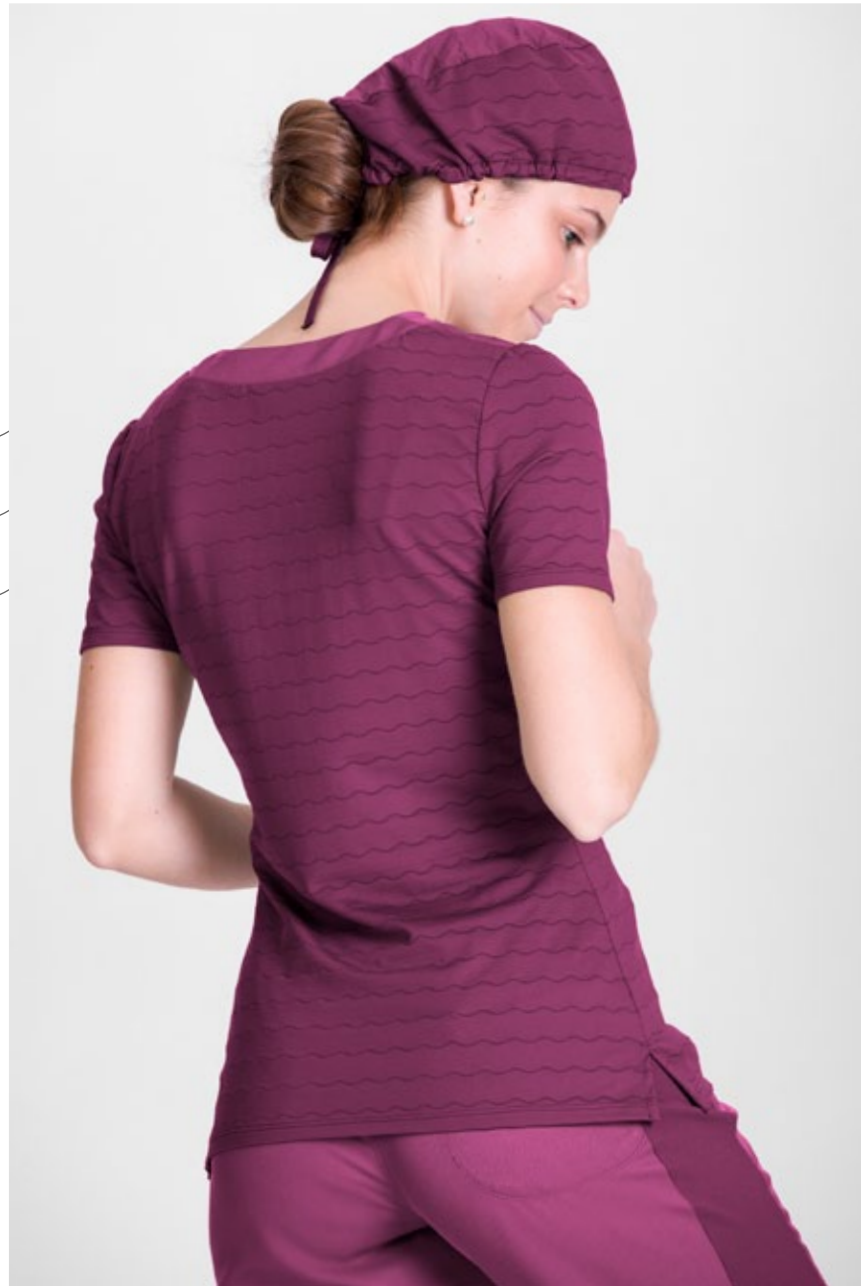
ONE SIZE

1739 WOMEN'S SHORT SLEEVE T-SHIRT NECKLINE
BUSTIER PREMIUM NATURA® STRETCH



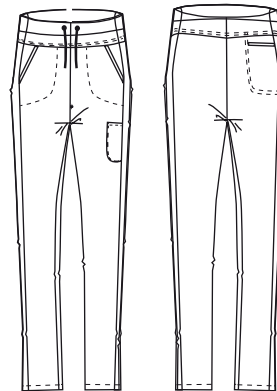
- 013 Gray
- 080 Fuchsia
- 141 Seaport

SIZES: XS - 2XL





1717 WOMEN'S SCRUB TROUSERS
PREMIUM NATURA® STRETCH



- 013 Gray
- 080 Fuchsia
- 141 Seaport

SIZES: XS - 2XL

norvil



**Beauty
and
Healthcare**

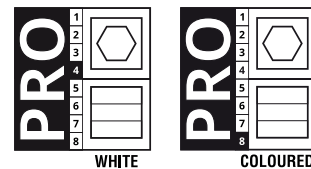
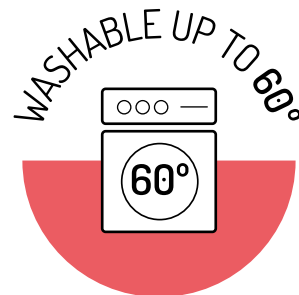
2

NATURA®



NATURA®

Our Natura® fabric line has all the advantages of cotton and none of its disadvantages. These high-endurance fibers make moisture rapidly evaporate by concentrating it in its outer side. Clothes are color-lasting, do not need to be ironed, they show no deformation along its lifetime and they resist industrial washing.



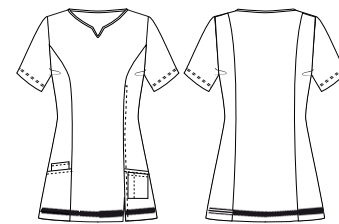
Natura® composition:
55% COTTON - 45% NATURA®



Beauty
and
Healthcare



1728 NATURA® WOMEN'S TUNIC TEAR NECKLINE BI-COLOR

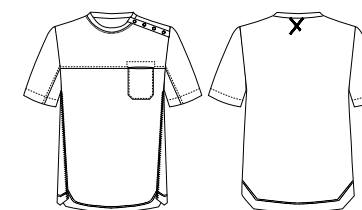


019 Navy + white

SIZES: XS - 2XL



1732 NATURA® MEN'S T-SHIRT



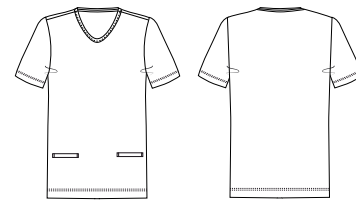
○ 001 White

● 019 Navy

SIZES: XS - 2XL



1738 WOMEN'S T-SHIRT SHORT SLEEVE NATURA®



○ 001 White

● 019 Navy

SIZES: XS - 2XL



1715 UNISEX ELASTIC WAIST
SCRUB TROUSERS NATURA®



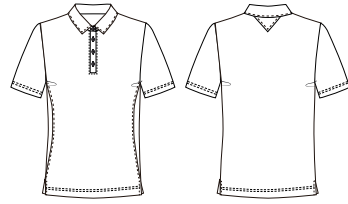
○ 001 White

● 019 Navy

SIZES: XS - 2XL

**Beauty
and
Healthcare**

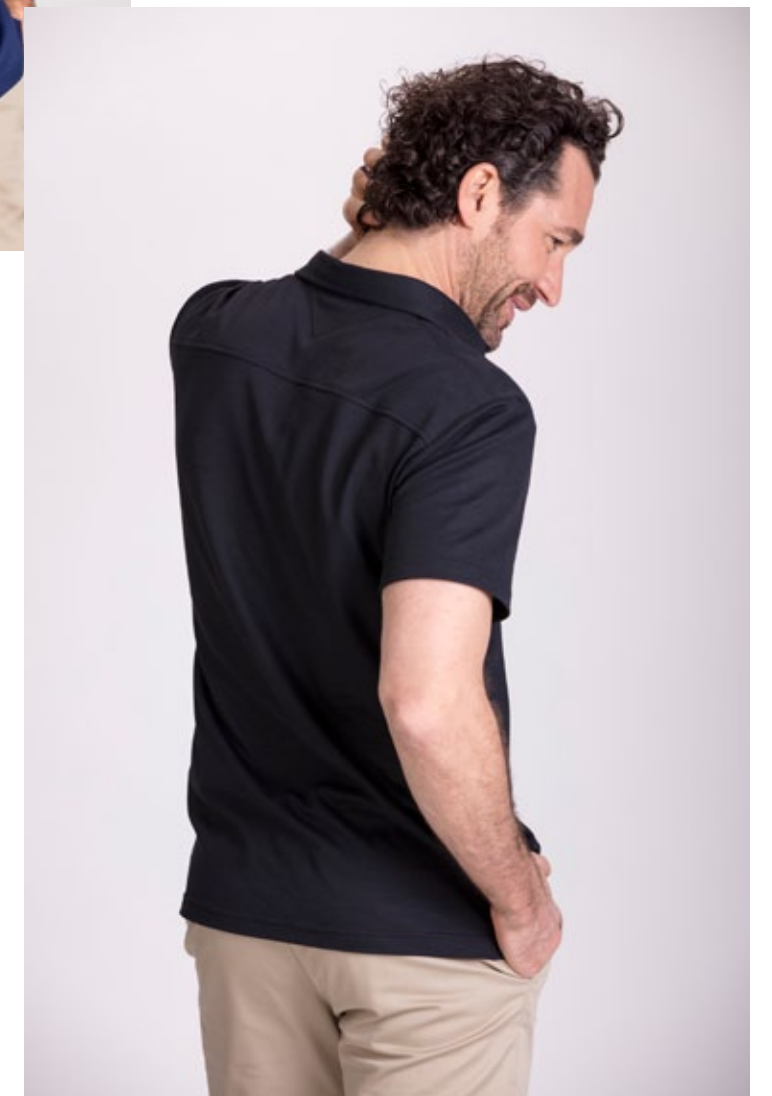
1724 WOMEN'S S/S POLO-SHIRT
NATURA®



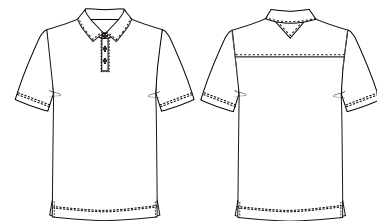
- 000 Black
- 001 White
- 011 Light blue
- 019 Navy

SIZES: XS - 2XL





1722 MEN'S S/S POLO-SHIRT NATURA®



● 000 Black

○ 001 White

● 011 Light blue

● 019 Navy

SIZES: XS - 2XL

norvil



**Beauty
and
Healthcare**

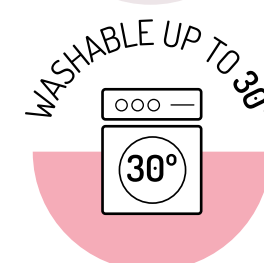
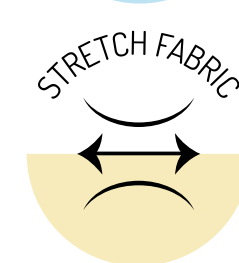
3

TWILLS



STRETCH COTTON TWILL

Our stretch cotton twill is an elastic and breathable fabric with a soft-touch finish that provides a high comfort level.



Composition:

97% COTTON - 3% ELASTANE

Grammage:

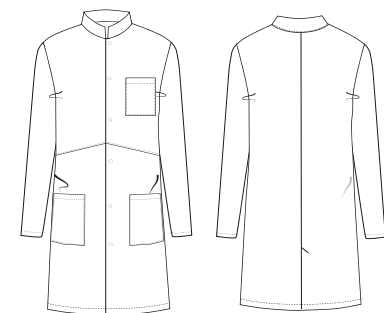
190 gr/m²

Beauty
and
Healthcare



norvil

1007 MEN'S COAT MANDARIN COLLAR AND STRETCH COTTON

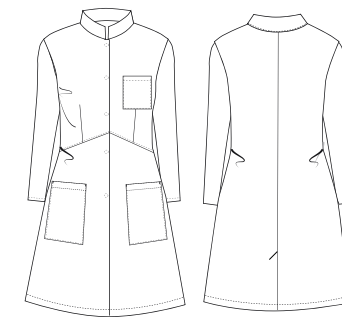


○ 001 White

SIZES: XS - 2XL



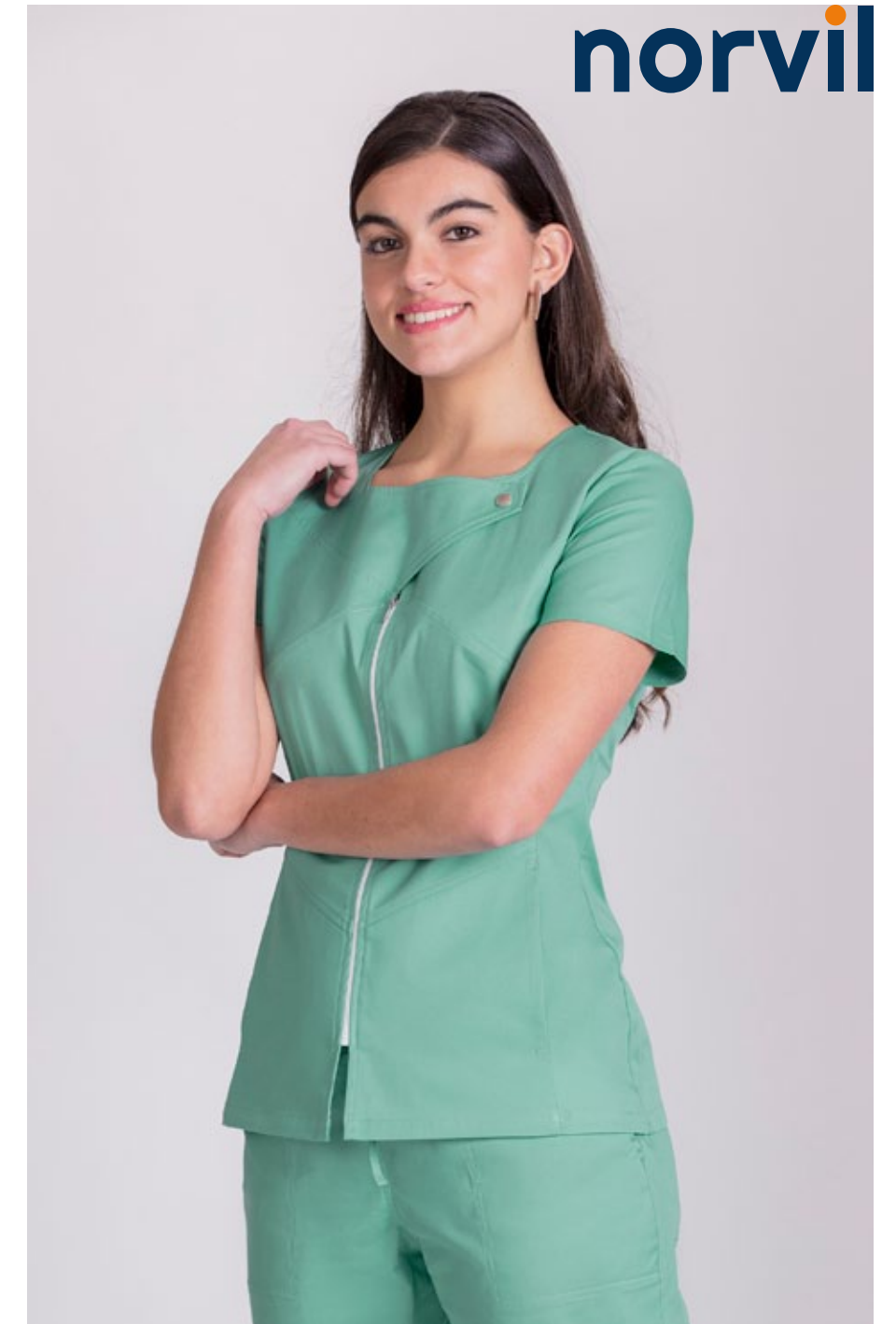
1067 WOMEN'S COAT MANDARIN COLLAR AND STRETCH COTTON



○ 001 White

SIZES: XS - 2XL

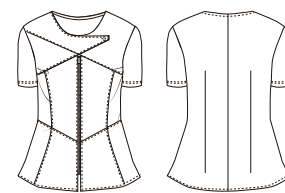
Beauty
and
Healthcare



norvil



1140 WOMEN'S S/S TUNIC STRETCH COTTON



SIZES: XS - 2XL

○ 001 White

● 011 Light blue

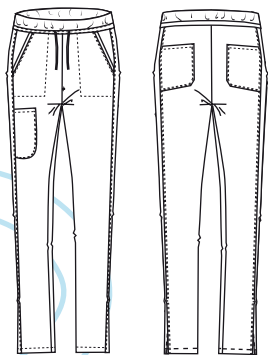
● 372 Mint







1709 WOMEN'S TROUSERS STRETCH COTTON



- 001 White
- 372 Mint

- 011 Light blue

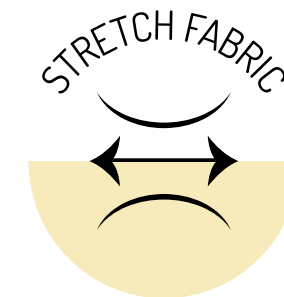
SIZES: XS - 2XL





TWILL AND RIB - KNIT FABRIC

It combines the resistance and durability of our twill with the comfort provided by the rib knit fabric.



Twill composition:

67% POLYESTER - 33% COTTON

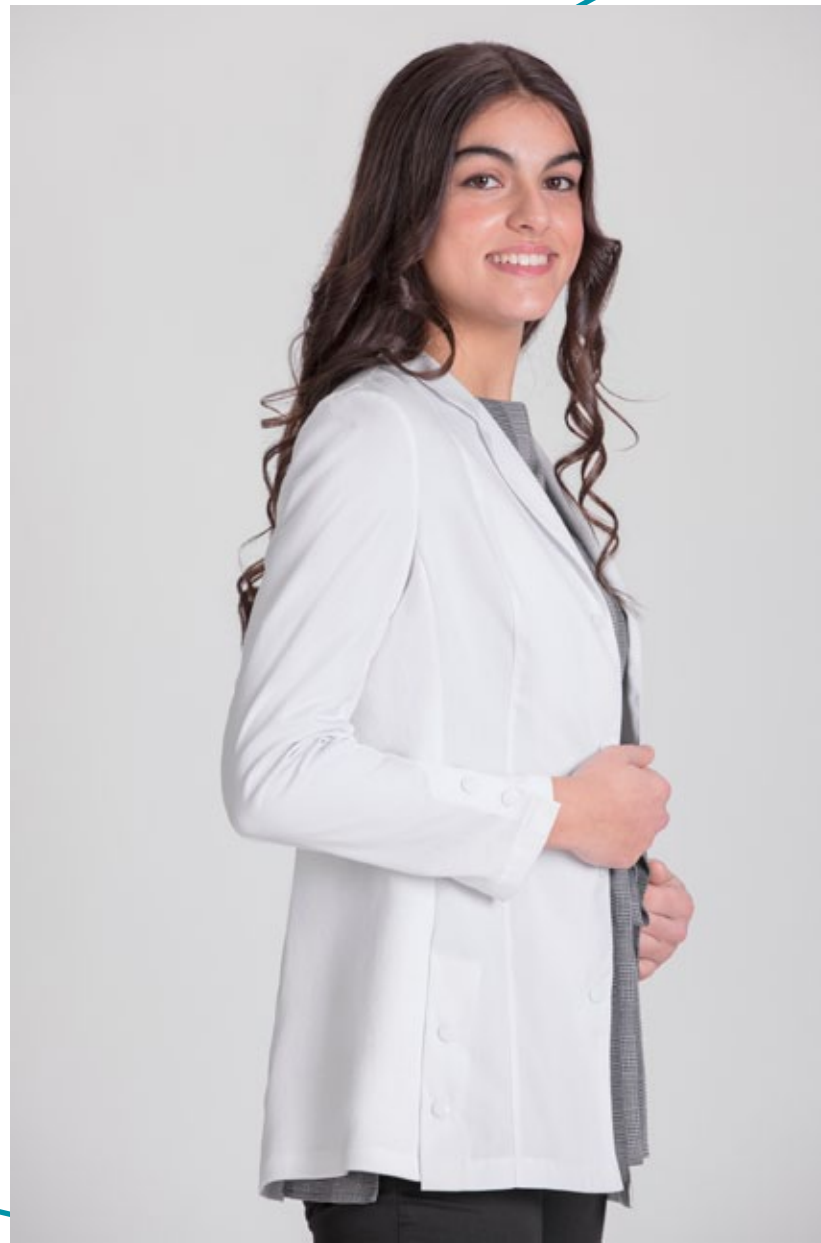
Twill Grammage:

195 gr/m²

Rib-knit fabric composition:

91% POLYESTER - 9% ELASTANE

Beauty
and
Healthcare



1053 WOMEN'S STRETCH SHORT COAT

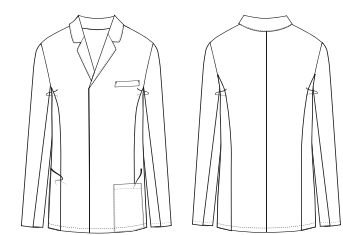


001 White

SIZES: XS - 2XL



1005 MEN'S STRETCH SHORT COAT

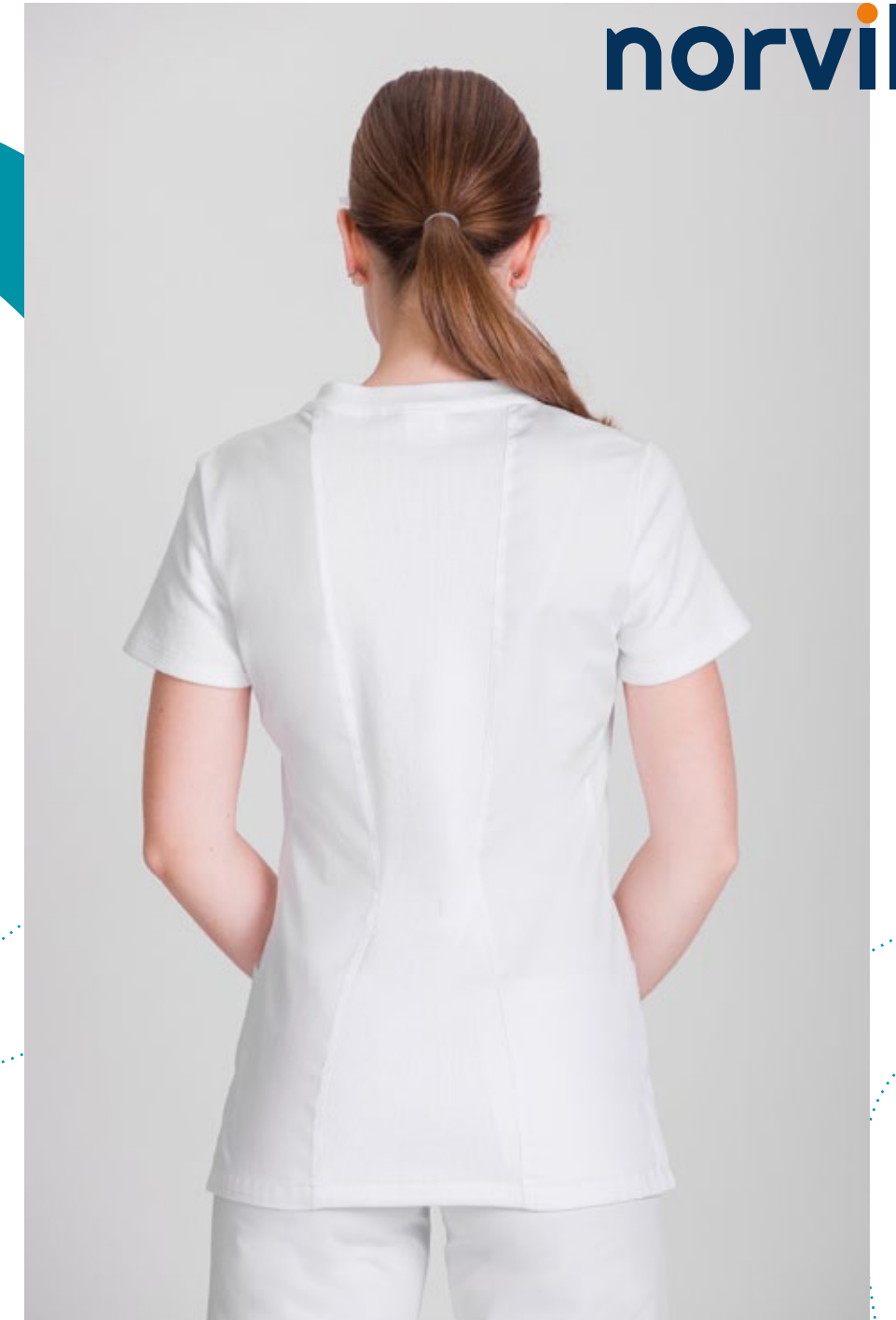


○ 001 White

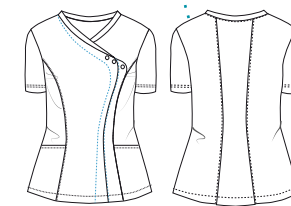
SIZES: XS - 2XL

Beauty
and
Healthcare

norvil



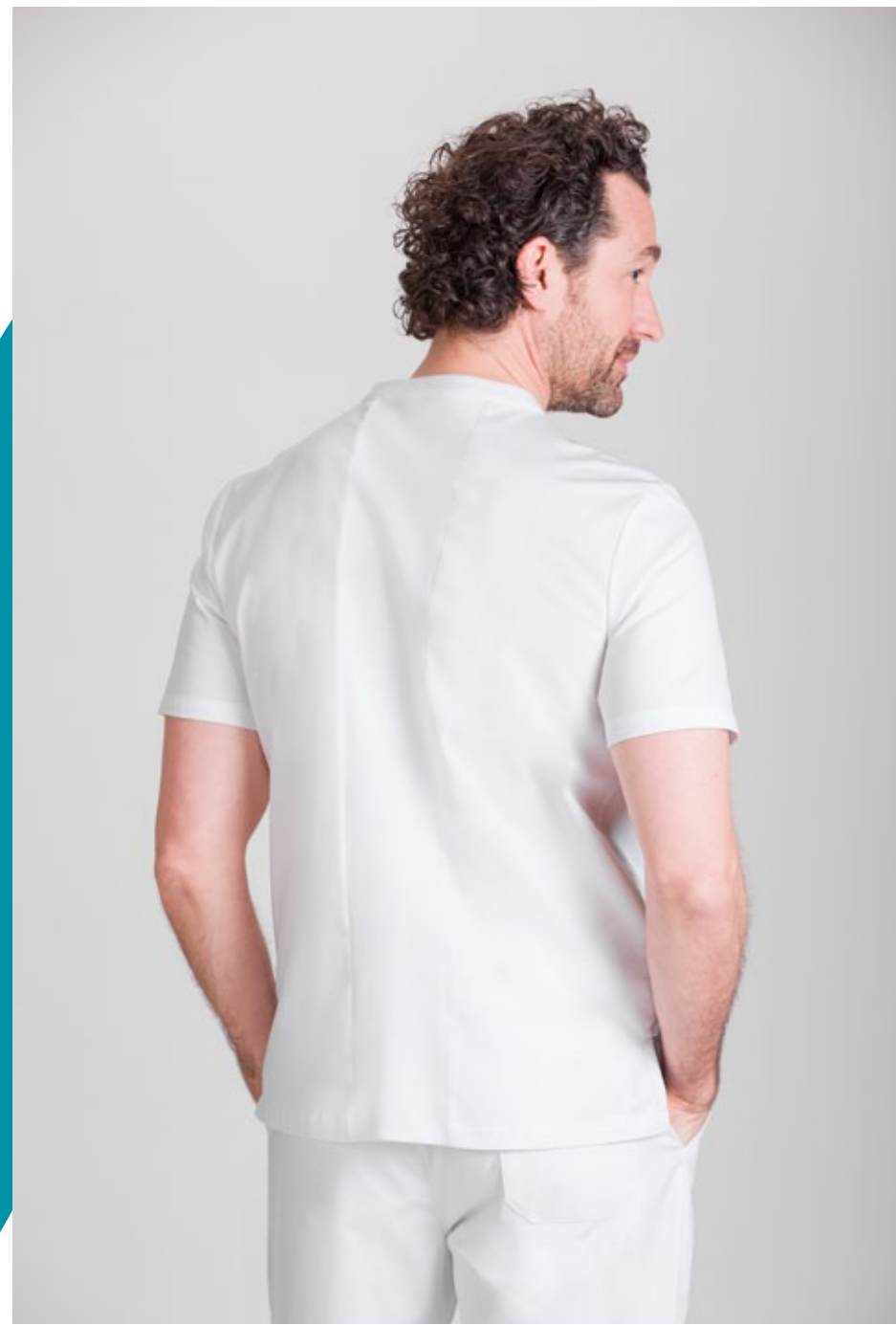
1176 WOMEN'S SHORT SLEEVE TUNIC WITH STITCH,
CENTER BACK AND SLEEVE IN RIB-KNIT



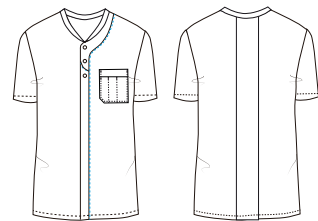
181 White + turquoise

190 White + plum

SIZES: XS - 2XL



1168 MEN'S SHORT SLEEVE TUNIC WITH STITCH, COLLAR AND CENTER BACK IN RIB-KNIT

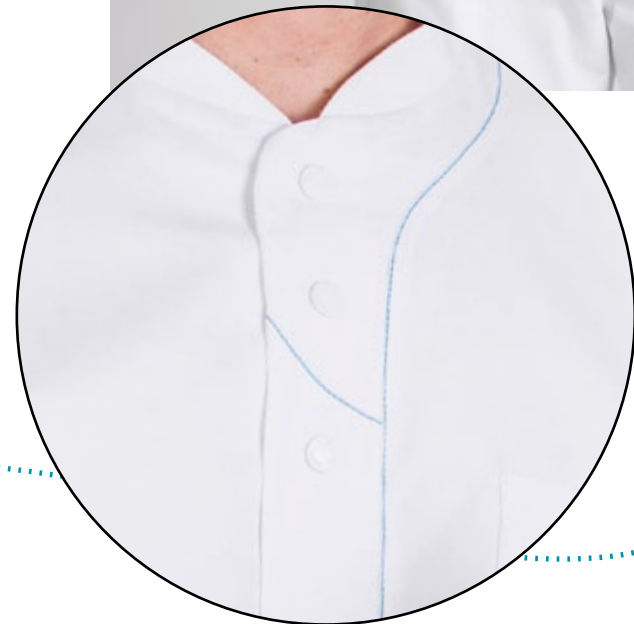


181 White + turquoise

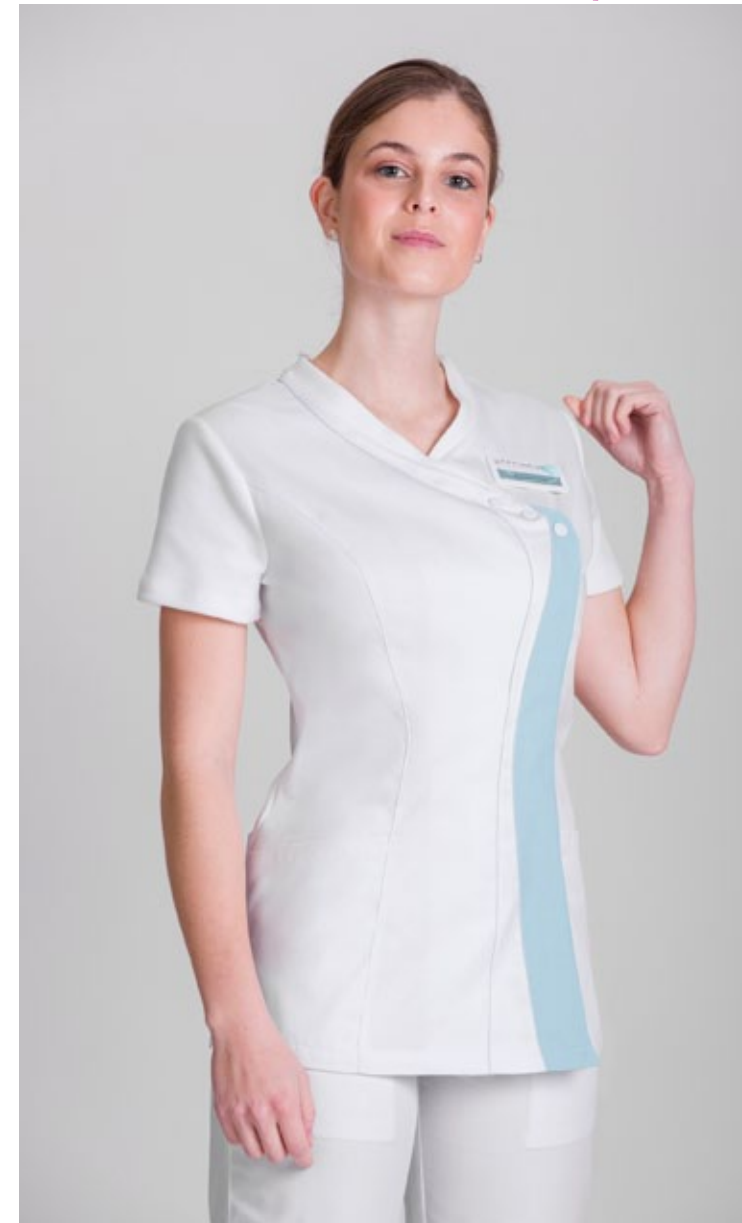
190 White + plum

SIZES: XS - 2XL

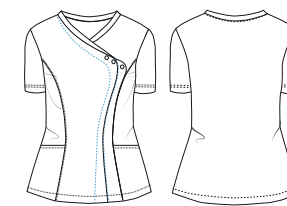
Beauty
and
Healthcare



norvil



1141 WOMEN'S SHORT SLEEVE TUNIC BICOLOR RIB COLLAR



411 White + light blue

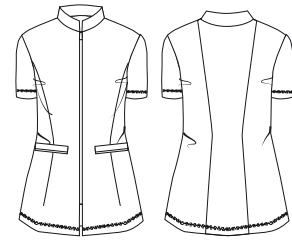
472 White + mint

SIZES: XS - 2XL

Beauty
and
Healthcare



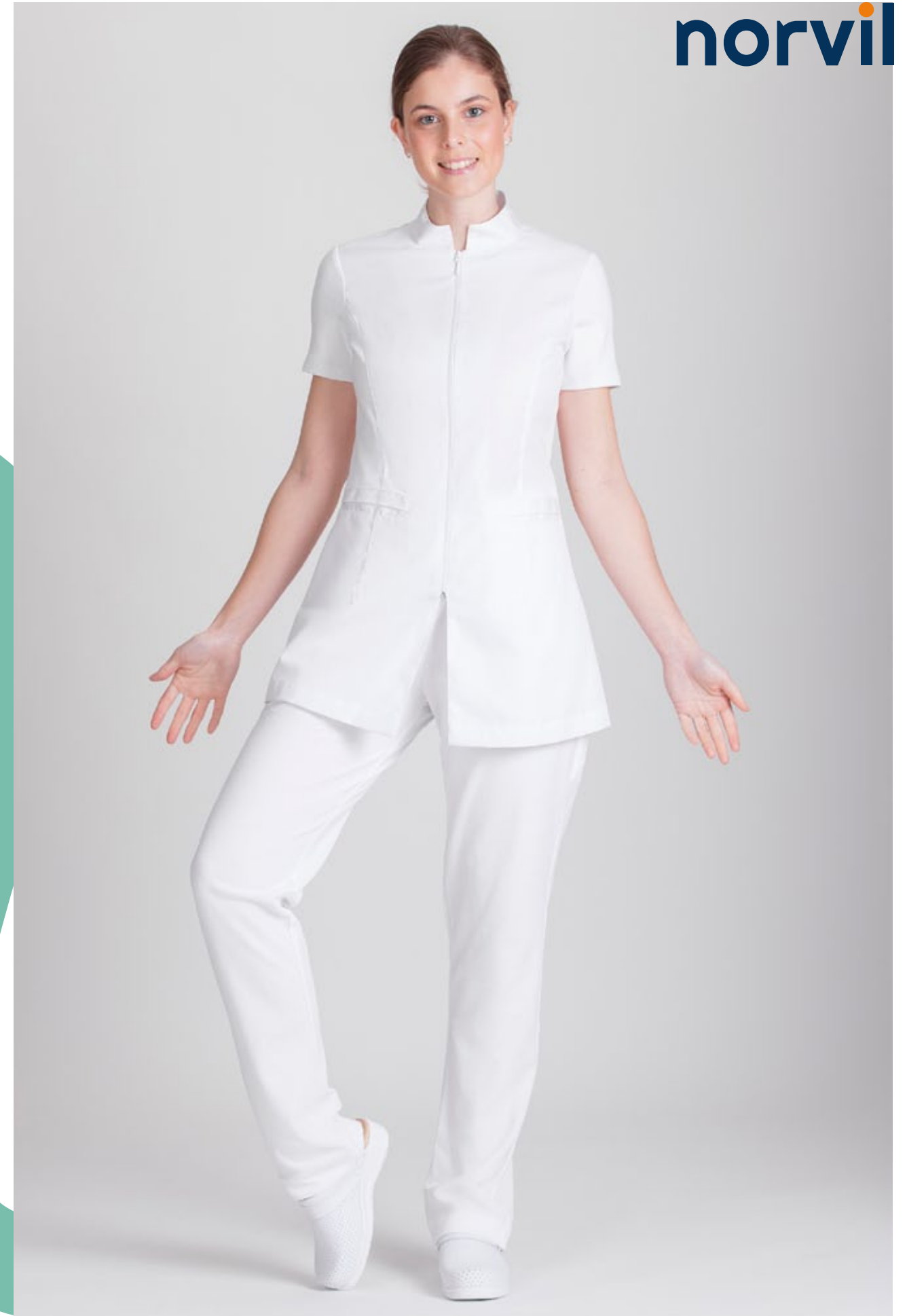
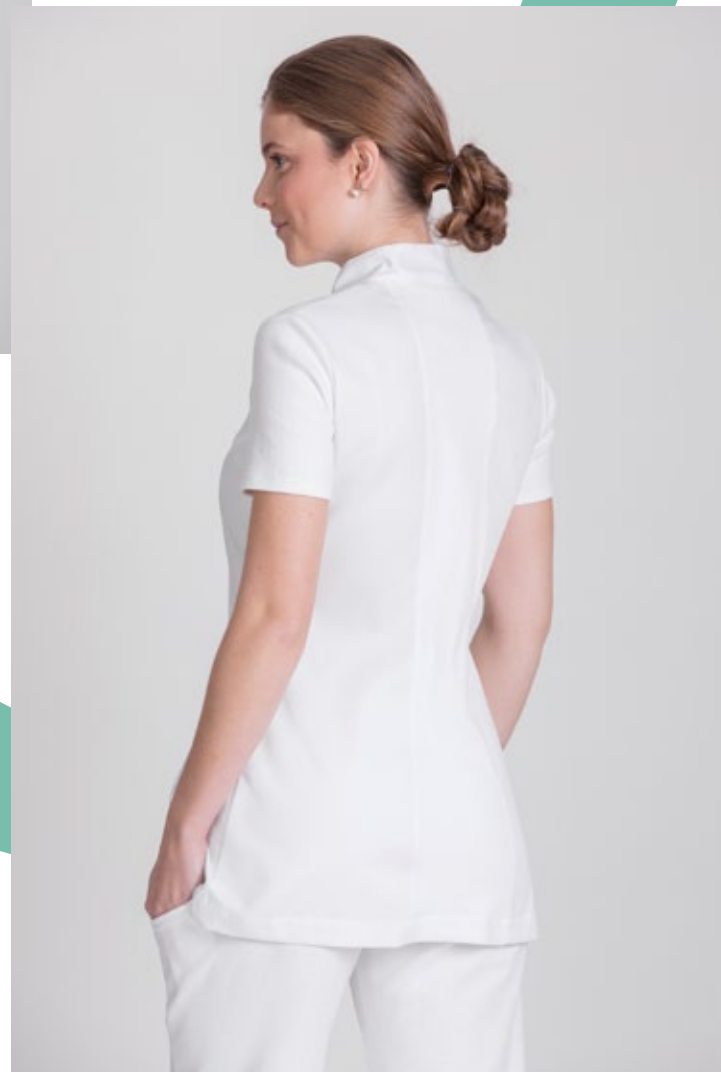
1177 WOMEN'S SHORT SLEEVE TUNIC RIBBED
MANDARIN COLLAR

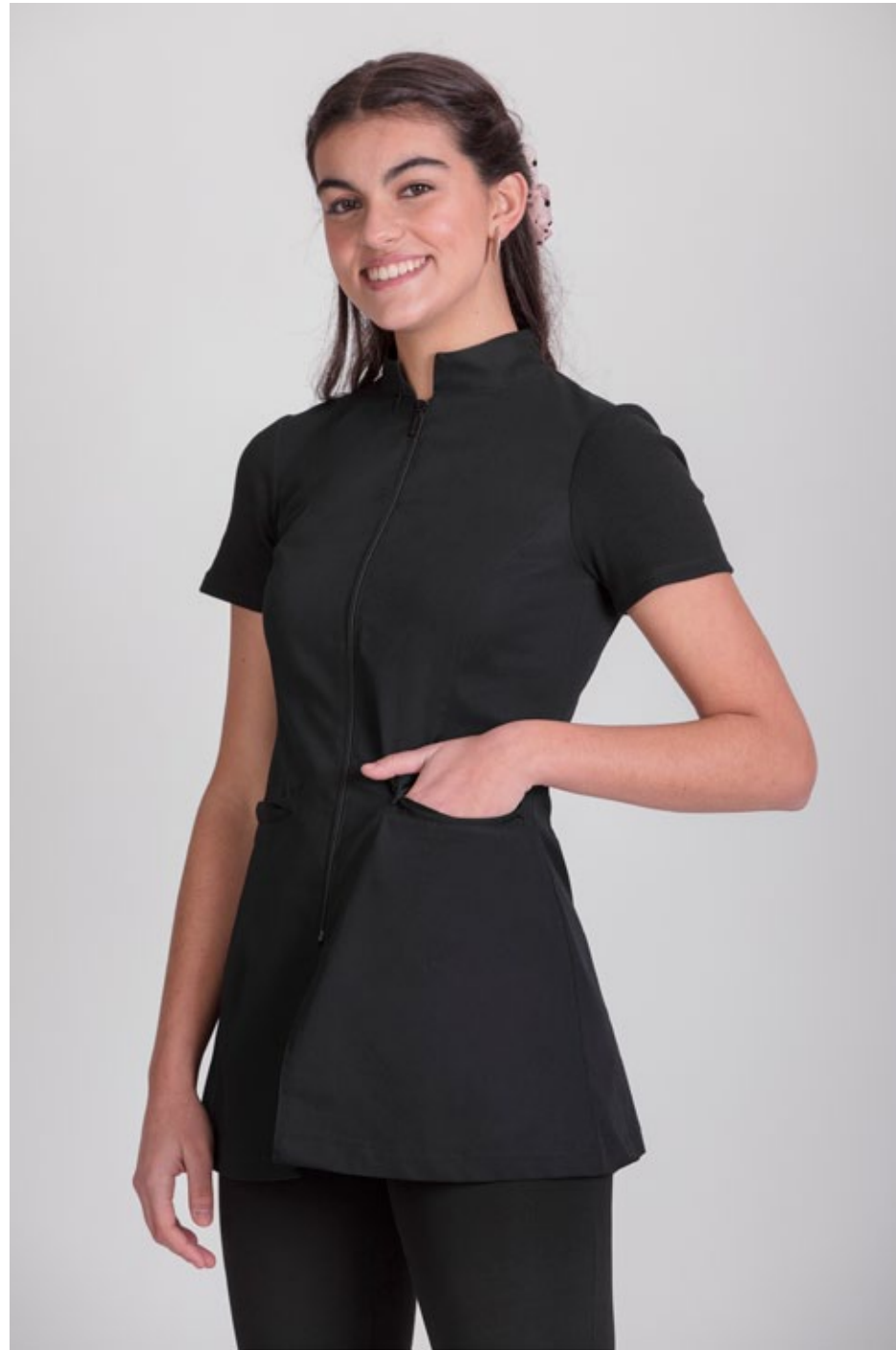


● 000 Black

○ 001 White

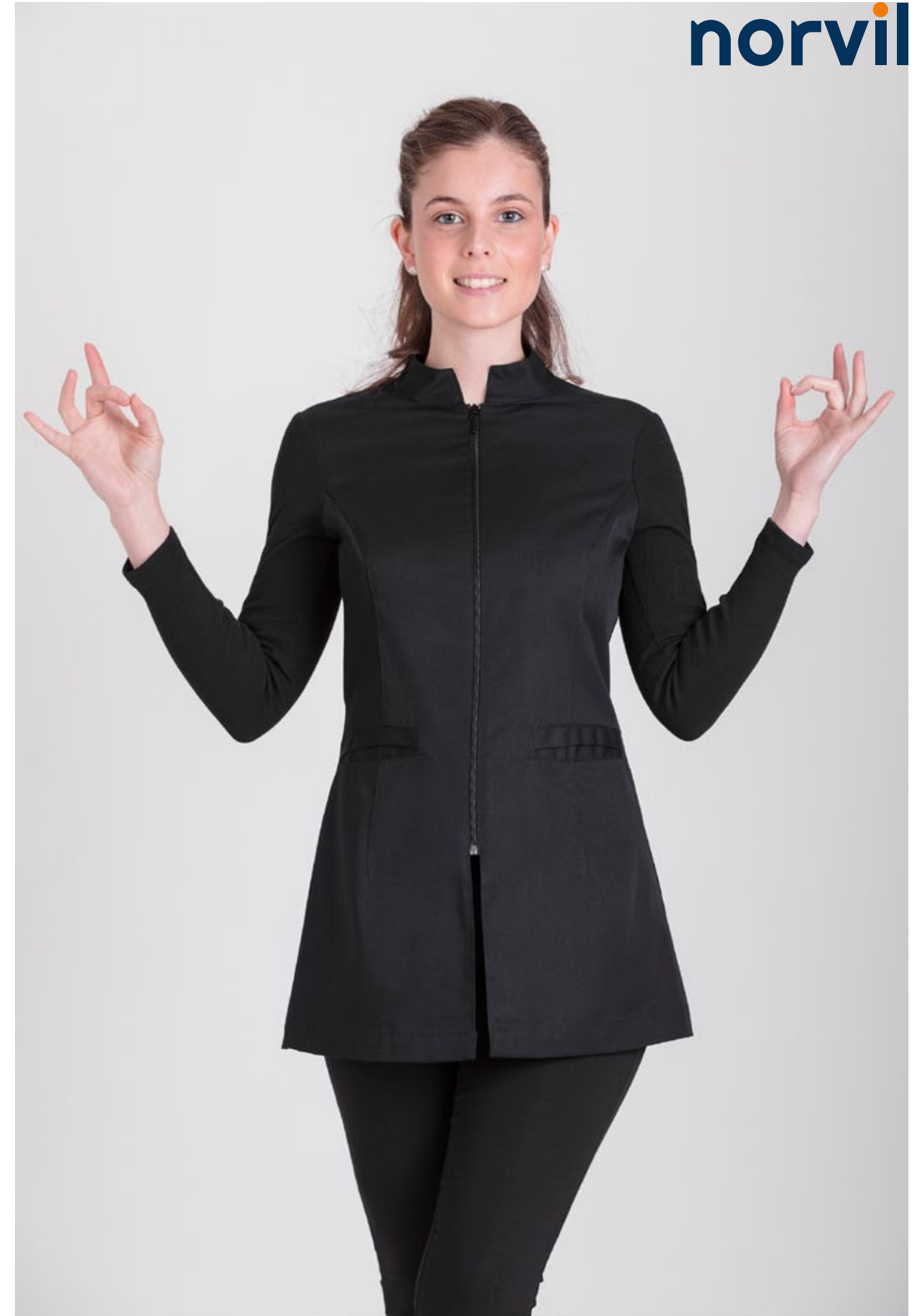
SIZES: XS - 2XL





1177 WOMEN'S SHORT SLEEVE TUNIC RIBBED MANDARIN COLLAR





1178 WOMEN'S L/S TUNIC RIBBED MANDARIN COLLAR



● 000 Black

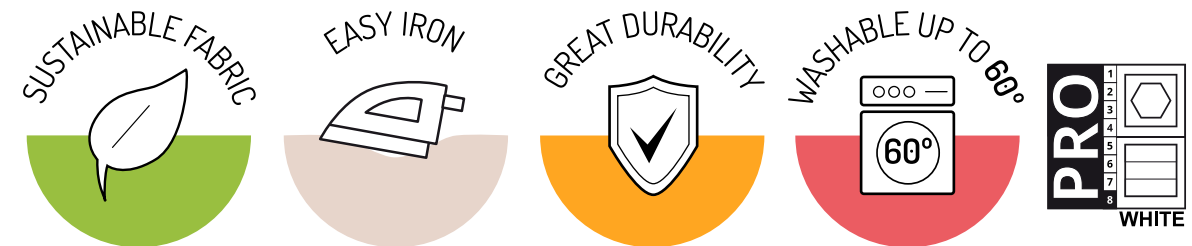
○ 001 White

SIZES: XS - 2XL

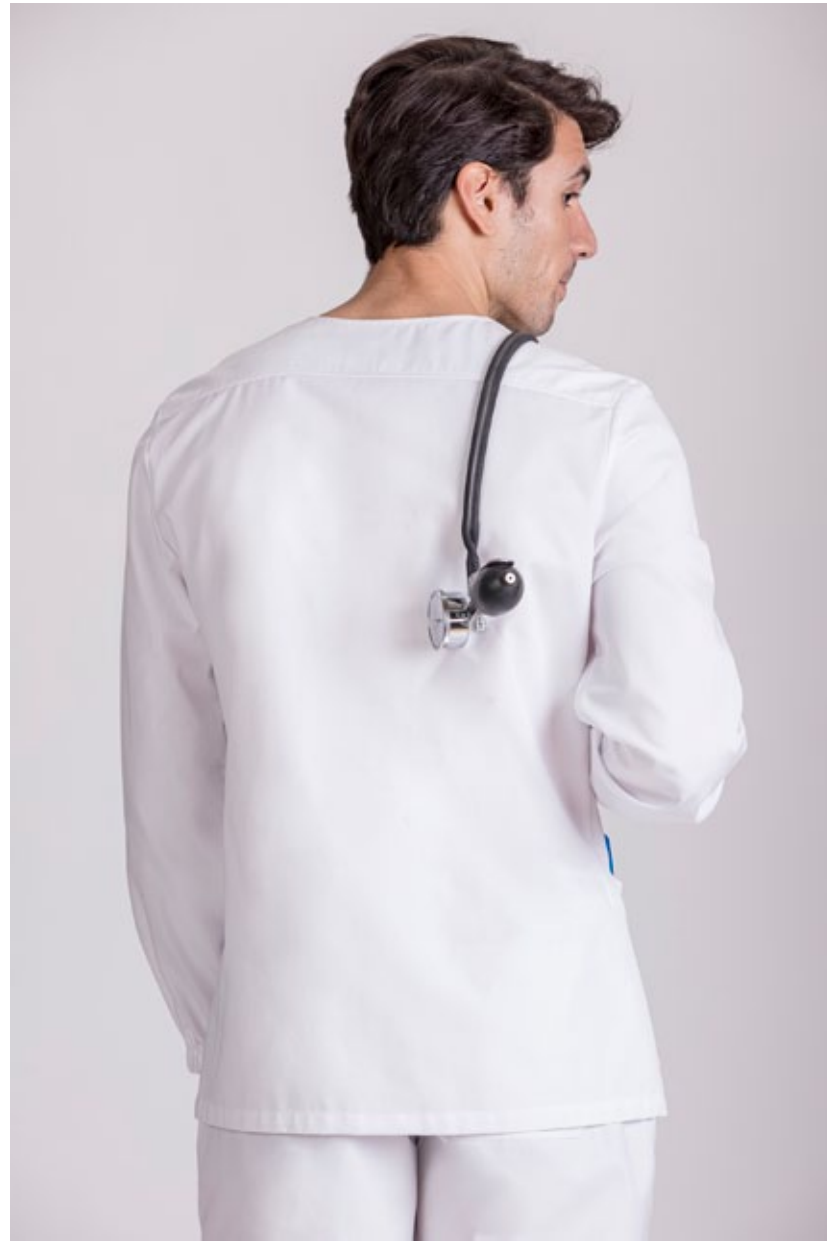


Recycled polyester and Sustainable cotton

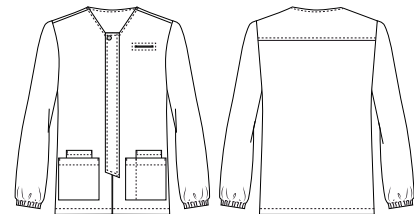
OXIGENO is our collection of sustainable products. In this collection we highlight our twill produced using recycled polyester and sustainable cotton with BCI (Better Cotton Initiative) certificate. The recycled polyester is made from recycled materials such as clear plastic bottles. These bottles would otherwise go into landfill and it would take 1,000 years for them to biodegrade. This is a great choice for those who are looking for a resistant fabric without giving up respect for our environment. Sustainable fabric, Industrial washing, easy ironing and great durability are among the main characteristics of this fabric.



Composition:
65% RECYCLED POLYESTER - 35% SUSTAINABLE COTTON
 Grammage:
175 gr/m²



1174 MEN'S SUSTAINABLE LONG SLEEVE TUNIC

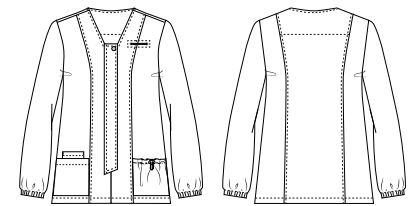


○ 001 White

SIZES: XS - 2XL



1144 WOMEN'S SUSTAINABLE LONG SLEEVE TUNIC



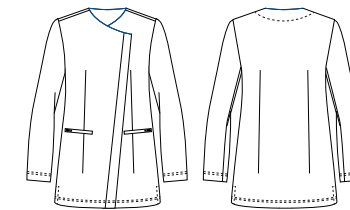
○ 001 White

SIZES: XS - 2XL





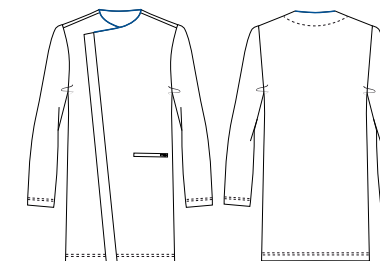
1056 WOMEN'S SUSTAINABLE COAT ASYMMETRICAL CLOSURE WITH PIPING



○ 001 White

SIZES: XS - 2XL

1006 MEN'S SUSTAINABLE COAT ASYMMETRICAL CLOSURE WITH PIPING

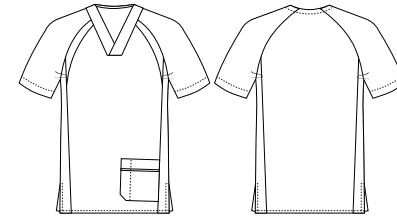


○ 001 White

SIZES: XS - 2XL



1193 UNISEX FOUR-COLOUR JACKET RECYCLED AND NATURA® FABRIC



043 Scarlet

153 Aquamarine

284 Pistachio

SIZES: XS - 2XL

This reference is manufactured in several materials.

Composition:

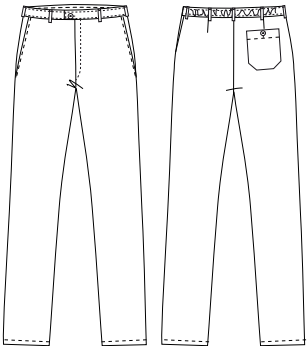
13% POLYESTER - 39% RECYCLED POLYESTER - 9% NATURA®

18% COTTON - 21% BCI COTTON





1708 UNISEX TROUSER WITH BACK ELASTIC WAIST
SUSTAINABLE FABRIC



○ 001 White

SIZES: **XS - 2XL**





TWILL / INDANTHRENE® COLORS

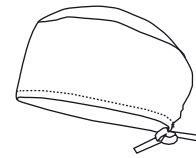
The resistance of our 195 gr polycotton twill merged with the solidity of the Indanthrene® colors makes these clothes to be very long-lasting.



Composition:
67% POLYESTER - 33% COTTON
Grammage:
195 gr/m²



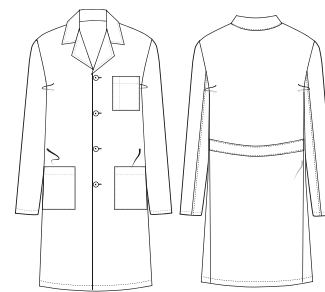
588 ADJUSTABLE SCRUB CAP



○ 001 White

ONE SIZE

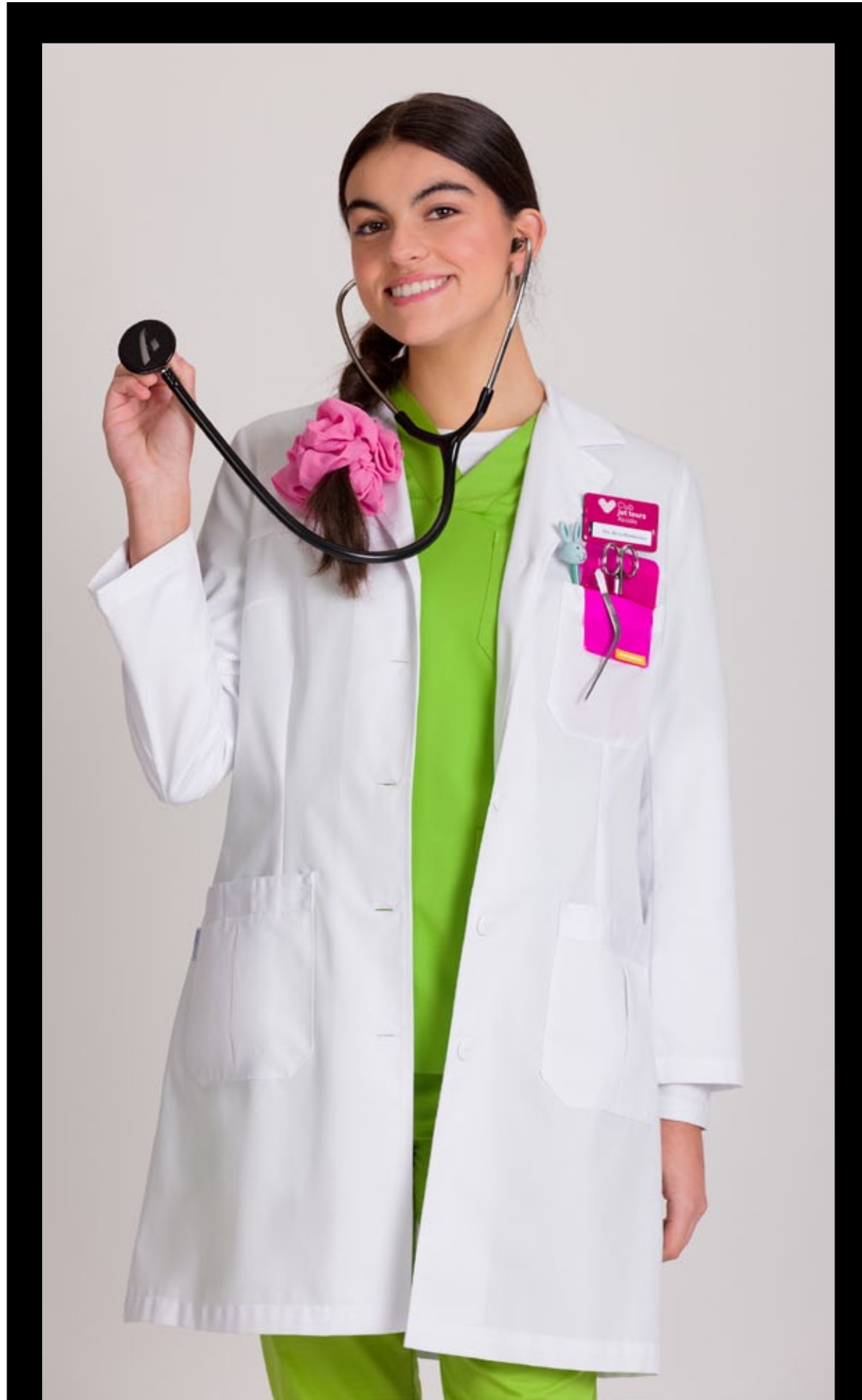
1012 MEN'S COAT LAPELED COLLAR



○ 001 White

SIZES: XS - 2XL





1091 WOMEN'S COAT LAPELED COLLAR

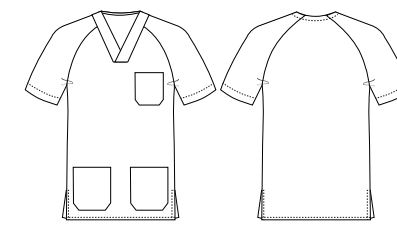


○ 001 White

SIZES: XS - 2XL



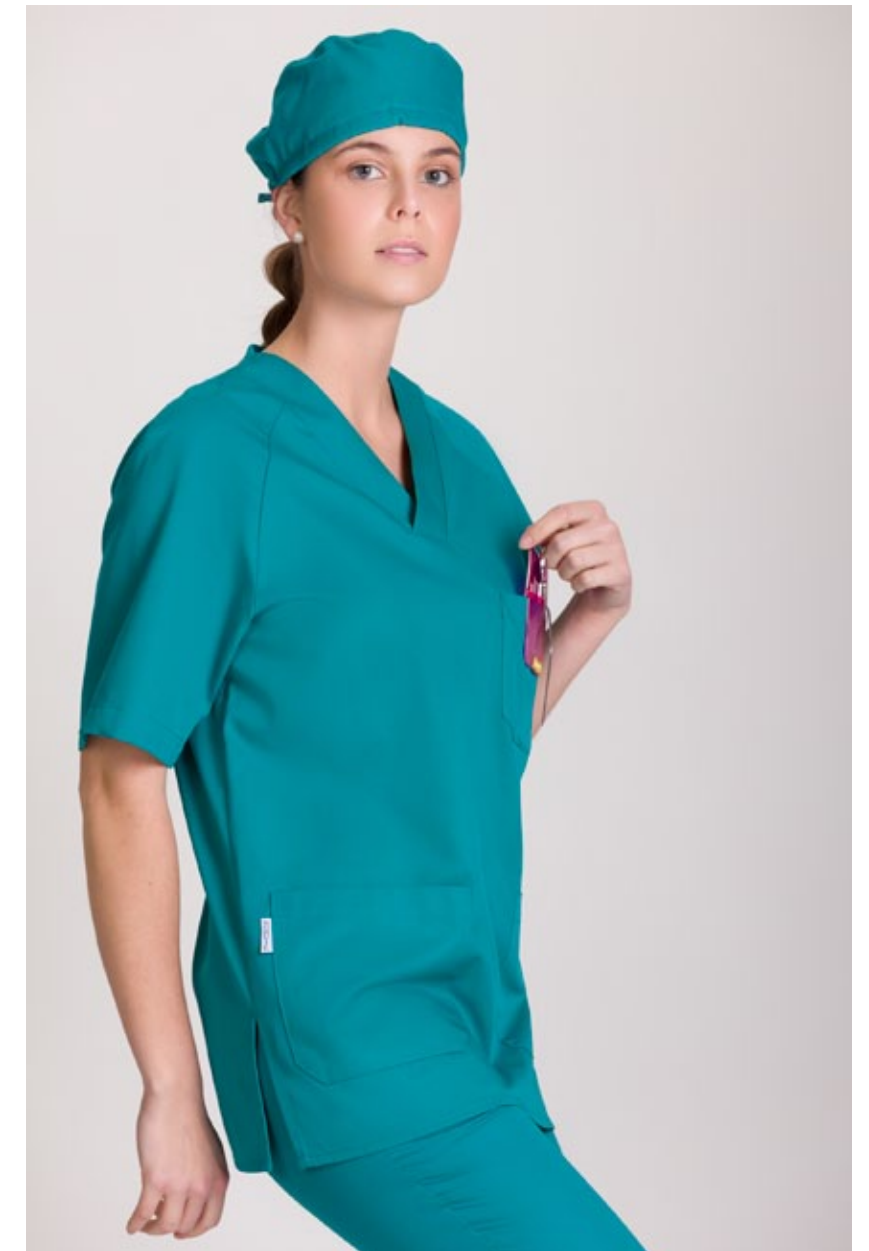
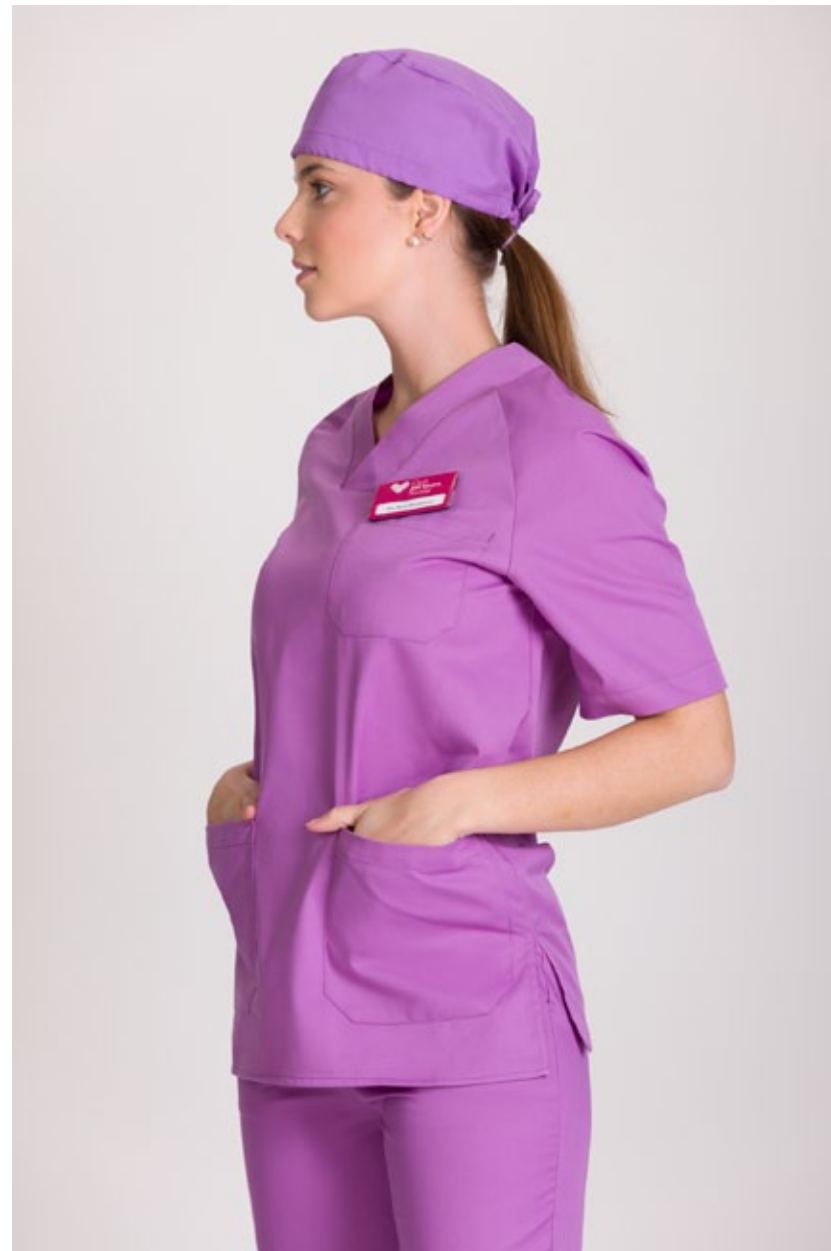
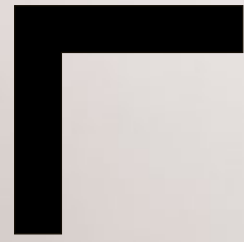
1194 UNISEX SHORT SLEEVE SCRUB



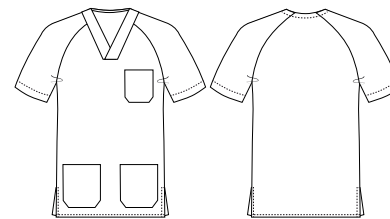
○ 001 White

SIZES: XS - 2XL





1184 UNISEX SHORT SLEEVE SCRUB

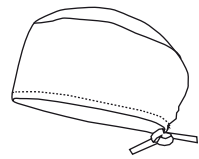


- 153 Aquamarine
- 285 Blue
- 284 Pistachio
- 286 Lilac

SIZES: XS - 2XL

INDANTHRENE® COLORS

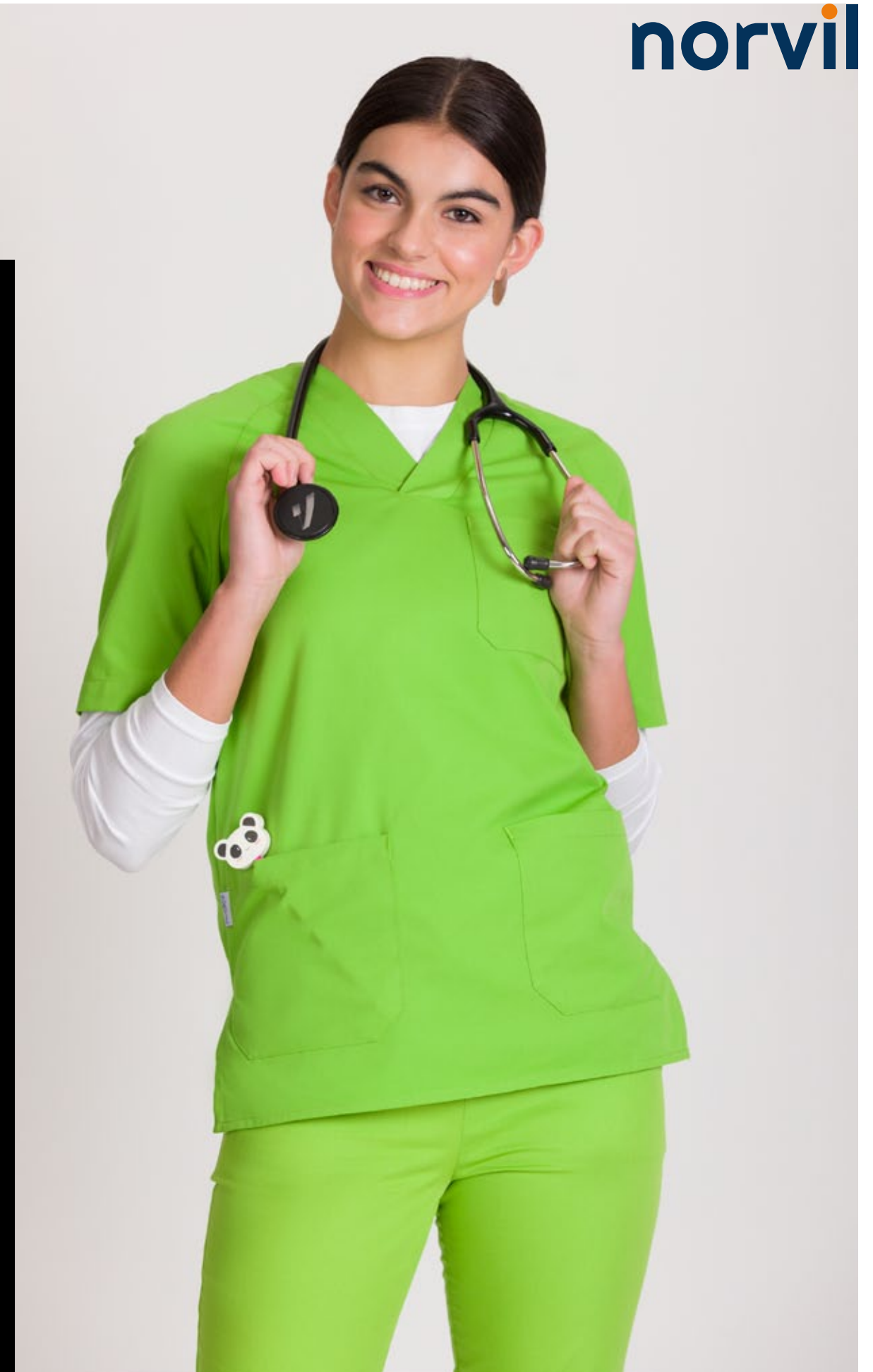
— 589 ADJUSTABLE SCRUB CAP



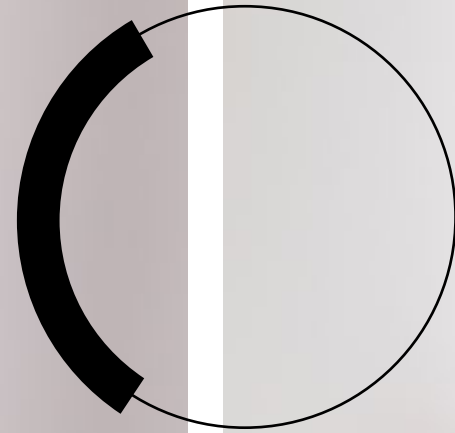
- 153 Aquamarine
- 284 Pistachio
- 285 Blue
- 286 Lilac

ONE SIZE

INDANTHRENE® COLORS



norvil



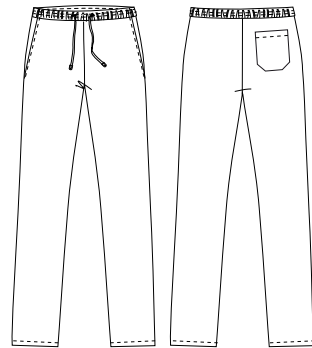
**Beauty
and
Healthcare**

INDANTHRENE® COLORS





90 UNISEX ELASTIC WAIST SCRUB TROUSERS



○ 001 White

○ 023 Sand

● 024 Chocolate

● 153 Aquamarine

● 284 Pistachio

● 285 Blues

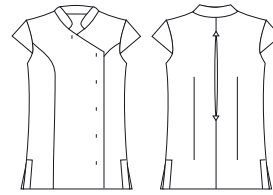
● 286 Lilac

SIZES: XS - 2XL

INDANTHRENE® COLORS



1107 WOMEN'S SHORT SLEEVE TUNIC MAO COLLAR

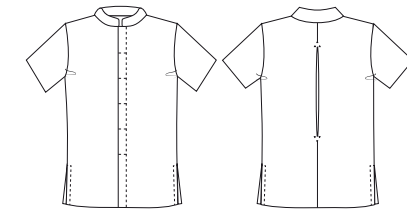


● 000 Black

SIZES: XS - 2XL

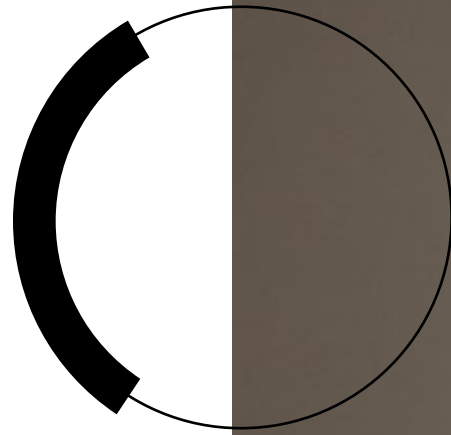


1197 MEN'S SHORT SLEEVE TUNIC MAO COLLAR

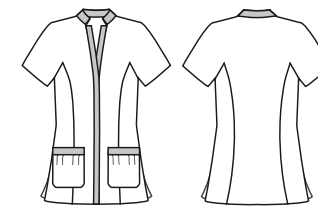


● 000 Black


SIZES: XS - 2XL




1123 WOMEN'S RANGLAN SLEEVE TUNIC



 216 White + lilac stripe

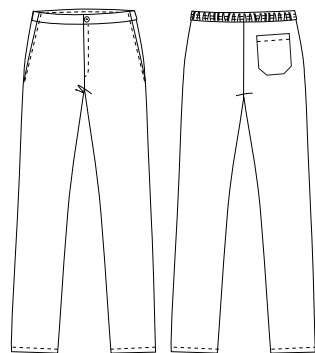
 224 White + blue stripe

 234 White + brown stripe

SIZES: 0 - 12



83 UNISEX BACK ELASTIC WAIST TROUSERS COLORS

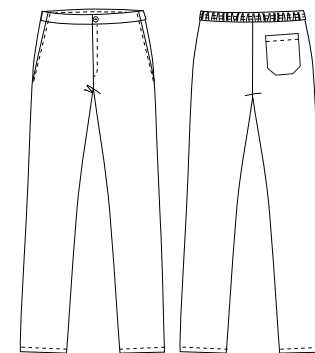


● 000 Black

● 188 Blue **INDANTHRENE® COLOR**

SIZES: XS - 2XL

82 UNISEX BACK ELASTIC WAIST TROUSERS



○ 001 White

SIZES: XS - 2XL

norvil

**Beauty
and
Healthcare**

4

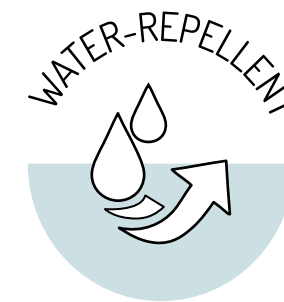
**ANTIBACTERIAL
MICROFIBER**





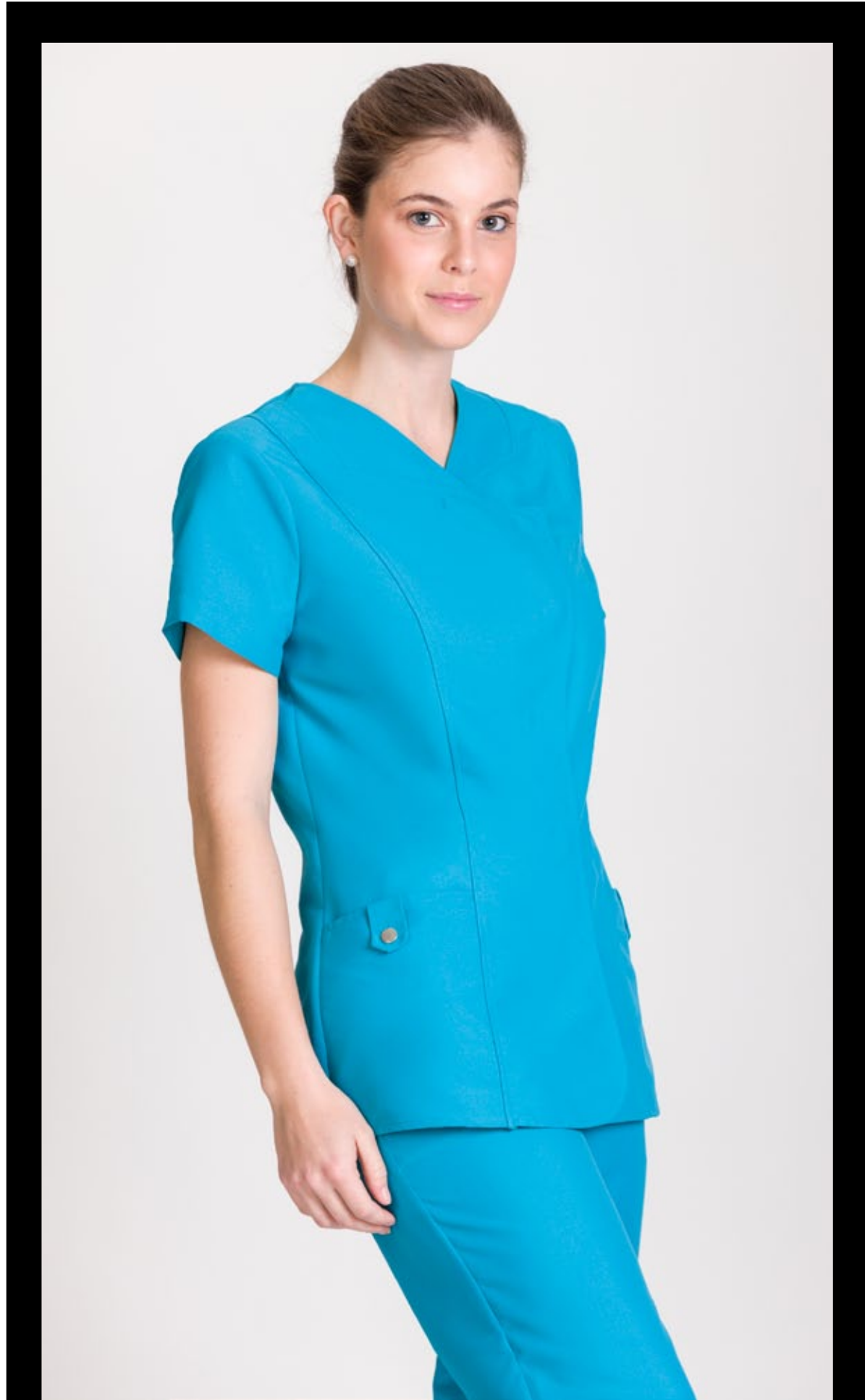
ANTIBACTERIAL MICROFIBER

This fabric has a high resistance to diluted bleach splashes. Moreover, it has antibacterial and antifungal properties. It reduces body odor and it is a very breathable fabric. In addition, it has a water-repellent finish. It allows industrial washing and it is quick drying. It does not need to be ironed.



Composition:
100% POLYESTER
Grammage:
150 gr/m²





- 011 Light blue
- 019 Navy
- 081 Turquoise
- 090 Plum

1170 WOMEN'S SHORT SLEEVE MICROFIBER ANTIBACTERIAL TUNIC



SIZES: XS - 2XL

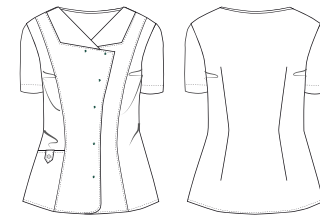


1170 WOMEN'S SHORT SLEEVE MICROFIBER ANTIBACTERIAL TUNIC





1172 WOMEN'S SHORT SLEEVE BICOLOR MICROFIBER ANTIBACTERIAL TUNIC



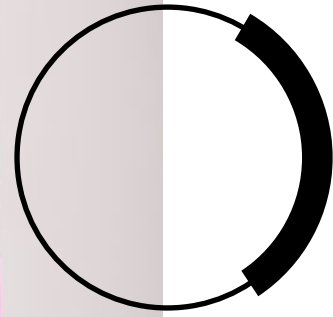
181 White + turquoise

190 White + plum

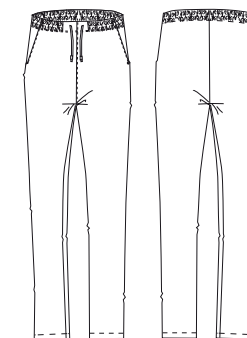
SIZES: XS - 2XL







1719 UNISEX ELASTIC WAIST MICROFIBER ANTIBACTERIAL SCRUB TROUSERS



- 011 Light blue
- 019 Navy
- 081 Turquoise
- 090 Plum

SIZES: XS - 2XL

norvil

Beauty
and
Healthcare

5

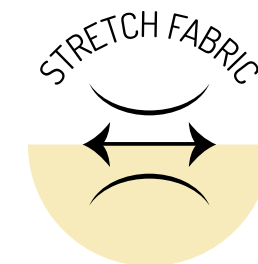
**STRETCH
MICROFIBER**





STRETCH MICROFIBER

Our stretch microfiber is a light, comfortable and highly elastic fabric.
It can be easily maintained.



Composition:

86% POLYESTER - 14% ELASTANE

Grammage:

118 gr/m²

Beauty
and
Healthcare

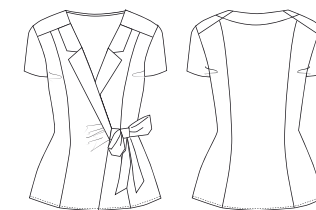
1100 WOMEN'S KIMONO M/C
STRETCH MICROFIBER

norvil





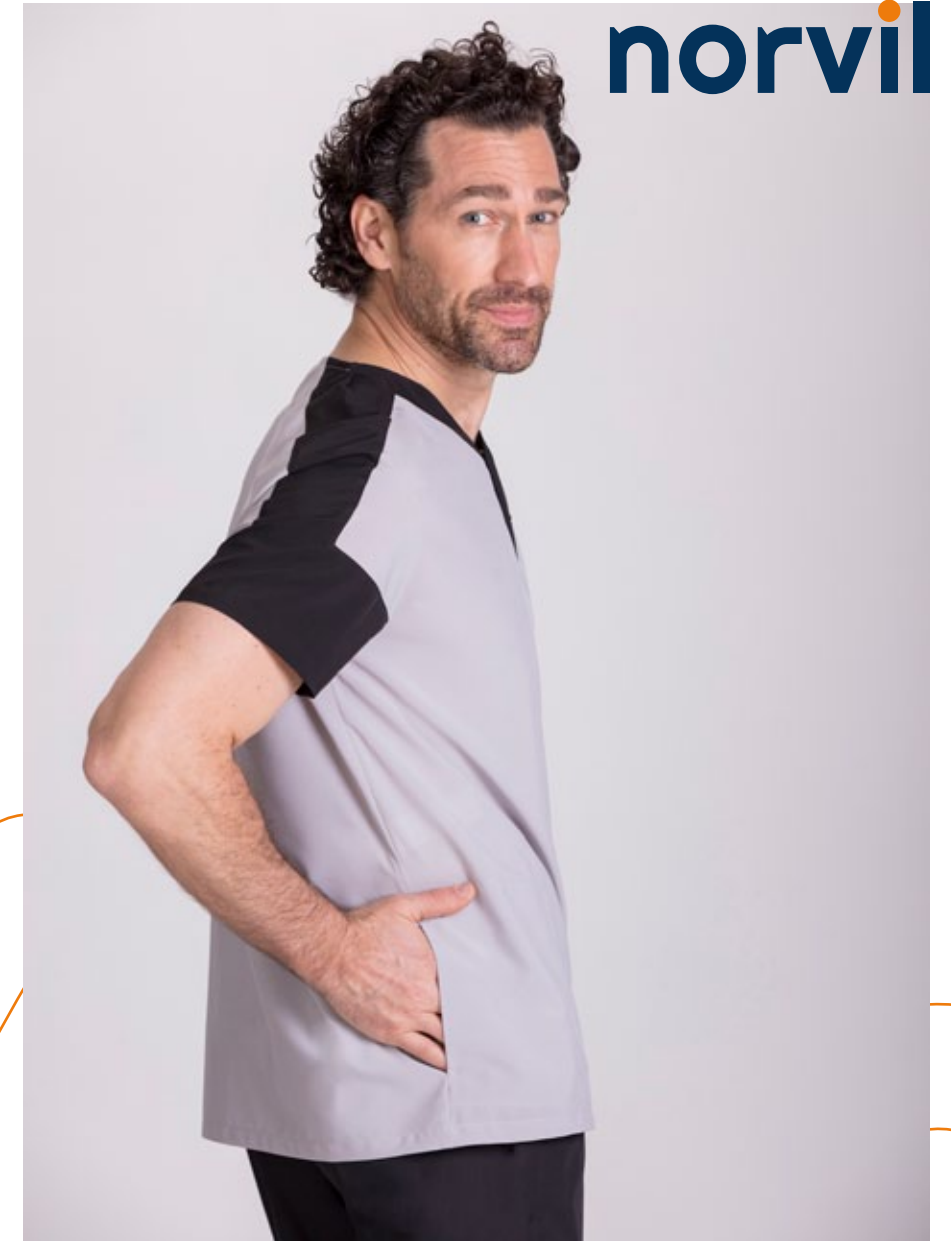
1100 WOMEN'S KIMONO M/C
STRETCH MICROFIBER



- 000 Black
- 005 Gray
- 019 Navy

SIZES: XS - 2XL

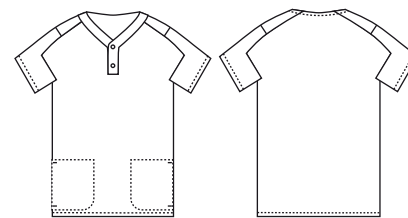
Beauty
and
Healthcare



— **1171** MEN'S BICOLOR TUNIC SHORT SLEEVE
STRETCH MICROFIBER



1171 MEN'S BICOLOR TUNIC SHORT SLEEVE
STRETCH MICROFIBER

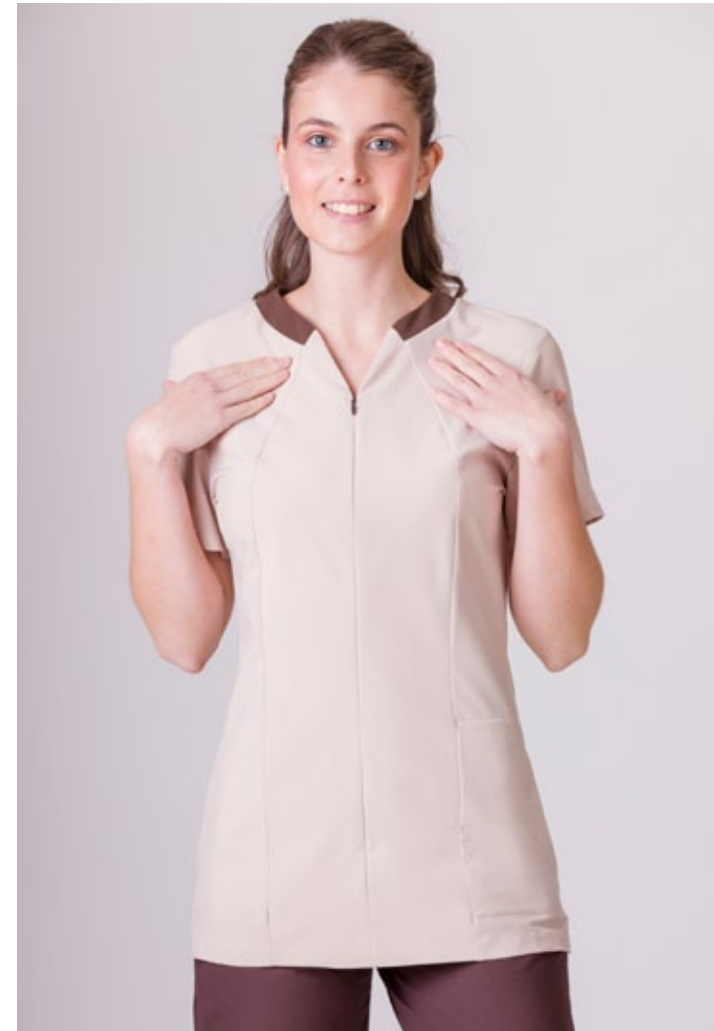
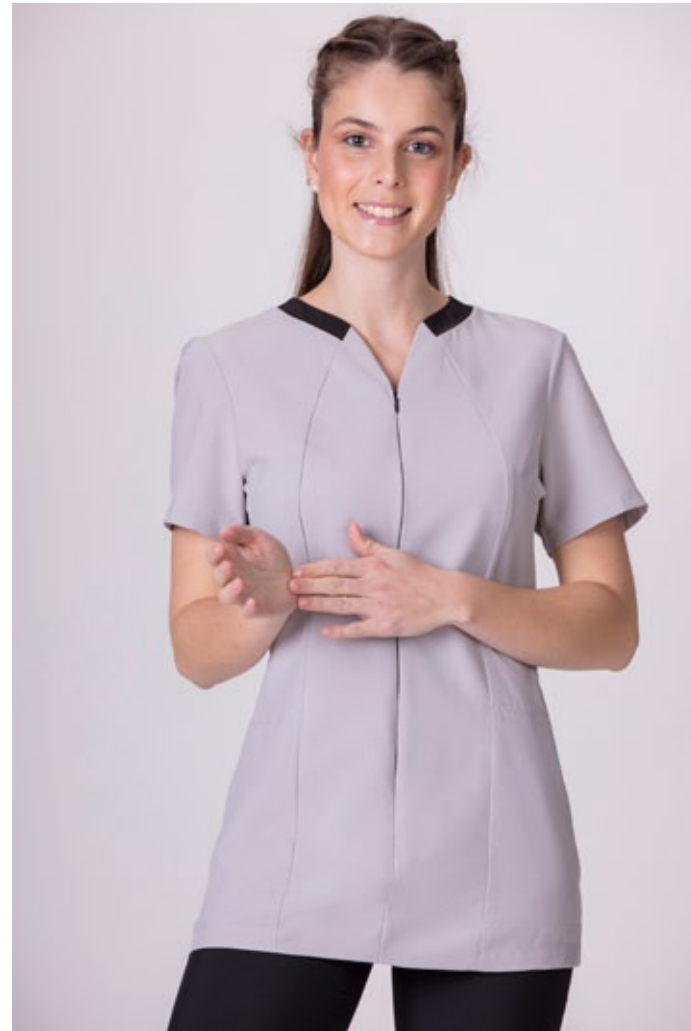


● 158 Navy + gray

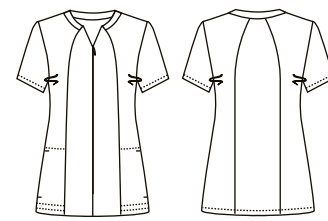
○ 159 Gray + black

SIZES: XS - 2XL





1121 WOMEN'S BICOLOR TUNIC SHORT SLEEVE
STRETCH MICROFIBER

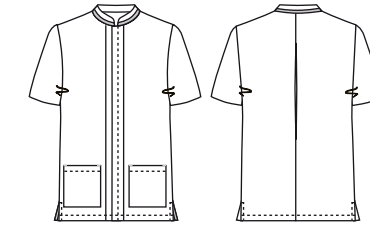


- 158 Navy + gray
- 159 Gray + black
- 319 Beige + brown

SIZES: XS - 2XL

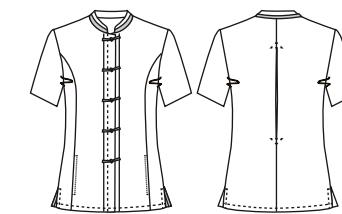


1192 MEN'S SHORT SLEEVE
STRETCH MICROFIBER TUNIC



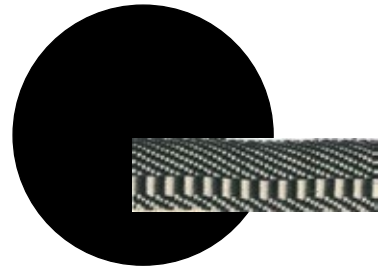
SIZES: XS - 2XL

1142 WOMEN'S SHORT SLEEVE
STRETCH MICROFIBER TUNIC

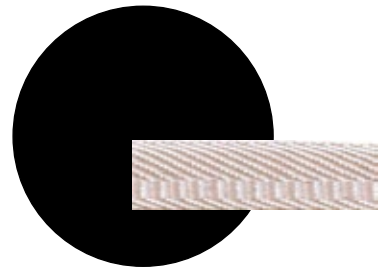


SIZES: 0 - 12

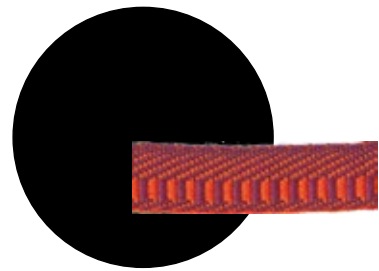
Beauty
and
Healthcare



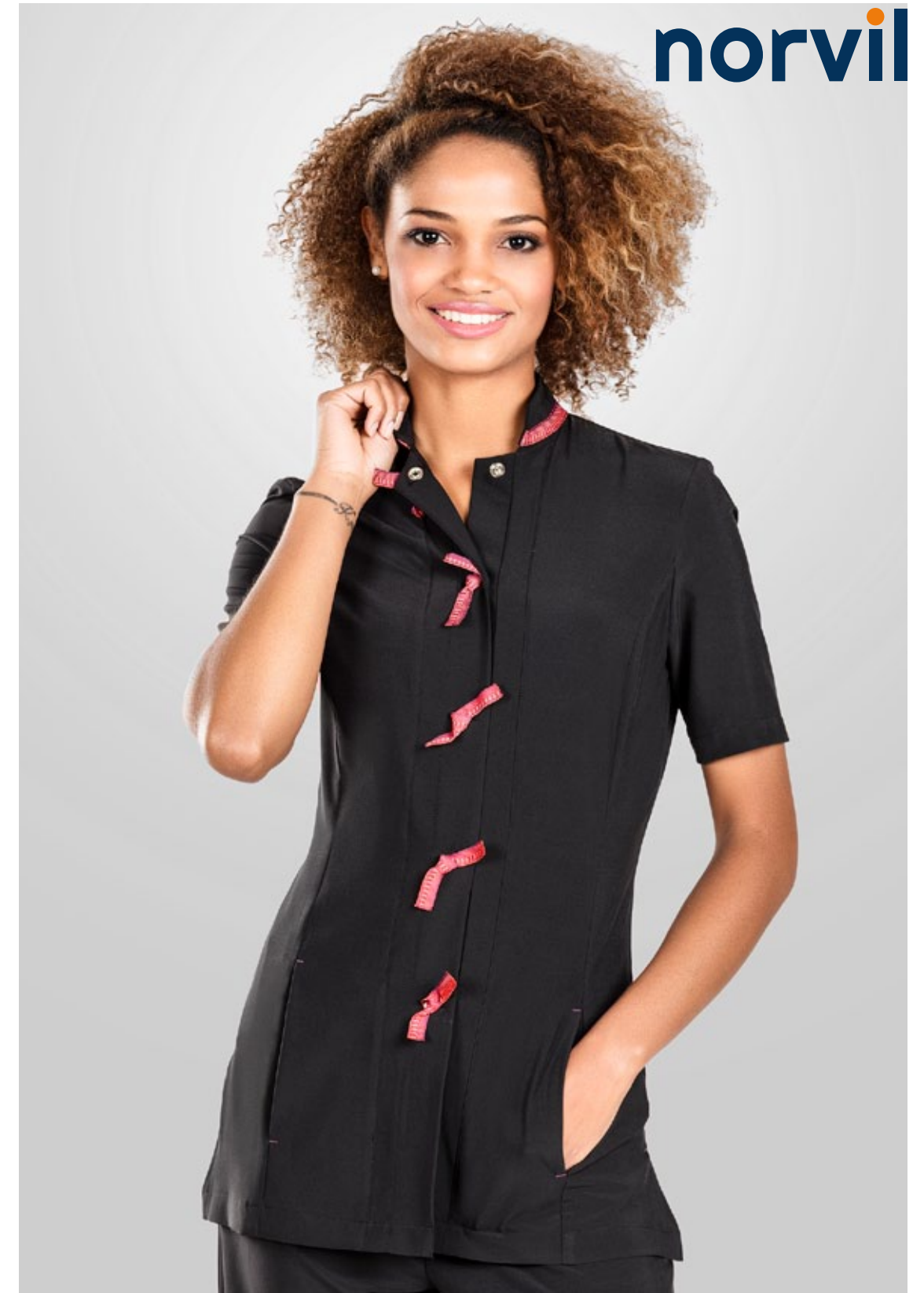
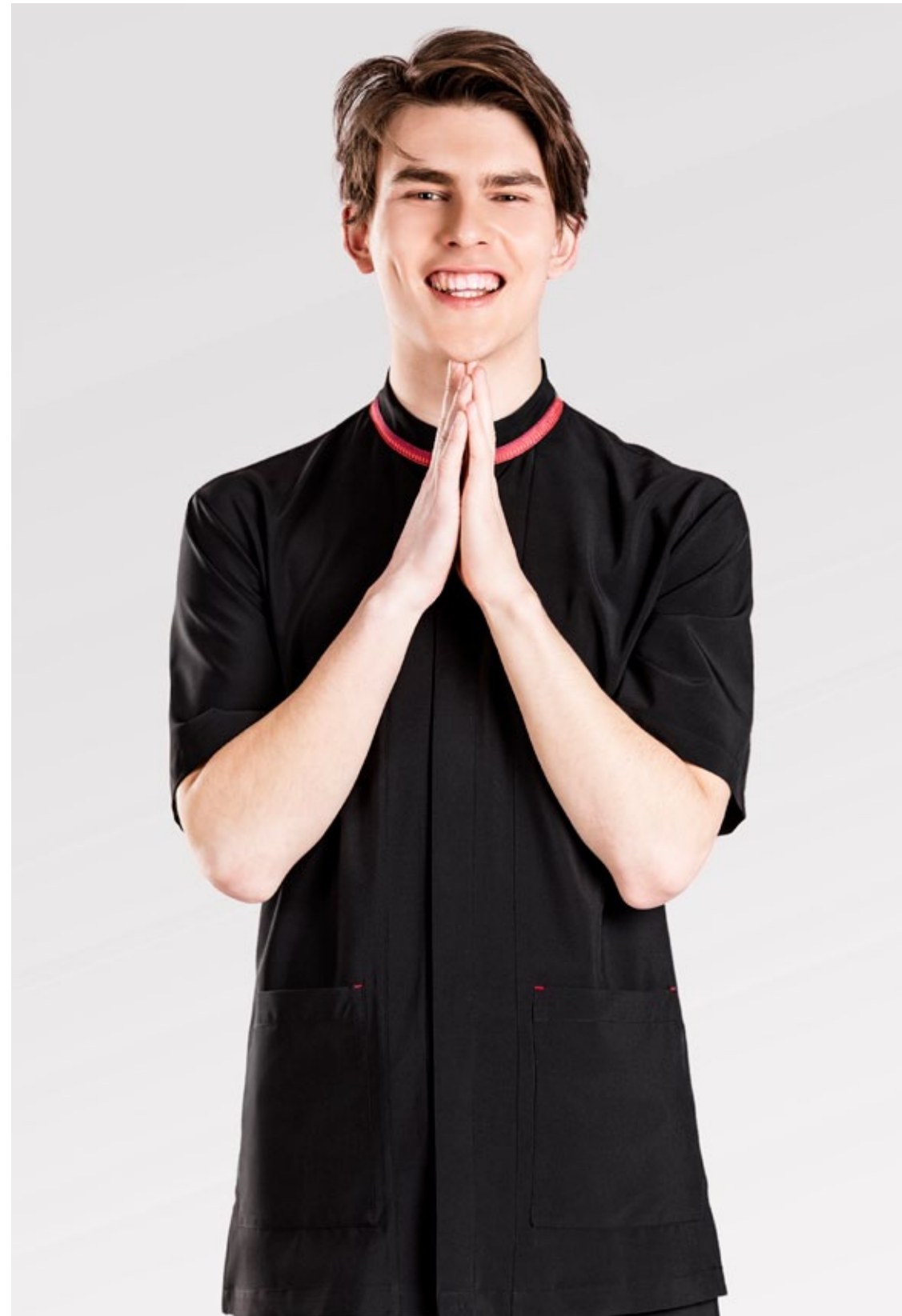
000 Black



023 Sand

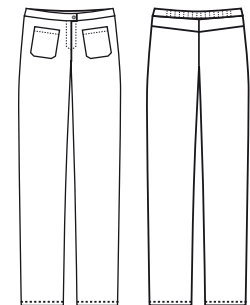


080 Fuchsia





95 WOMEN'S STRETCH MICROFIBER TROUSERS



● 000 Black

● 019 Navy

SIZES: XS - 2XL

norvil

**Beauty
and
Healthcare**

6

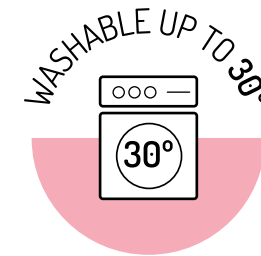
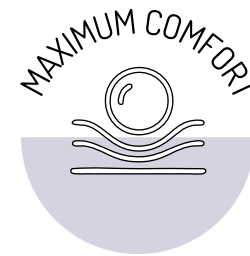
**OTHER
TEXTURES**





PIQUE

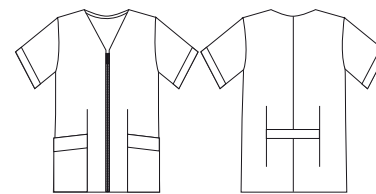
A classic fabric characterized by fine ribbing.



Pique composition:

60% POLYESTER - 40% COTTON

1150 Women's short sleeve bicolor tunic with zip



○ 001 White

◐ 218 Blue

◑ 220 Black

SIZES: 0 - 12





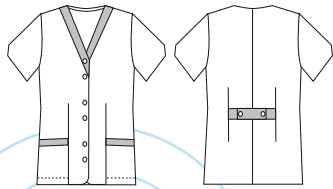
SEERSUCKER

Cotton-rich fabric with a seersucker finish that gives it a peculiar look. Its wrinkled effect allows the skin to breathe better. It is a very lightweight and soft fabric.



Cotton-rich Seersucker composition:
65% COTTON - 35% POLYESTER

1127 WOMEN'S SHORT SLEEVE TUNIC GINGHAM SEERSUCKER



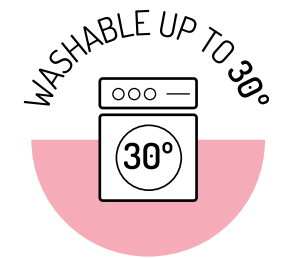
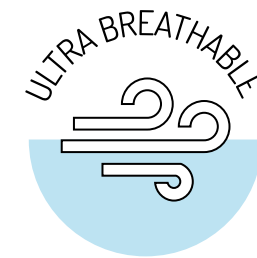
 000 Black gingham + white twill

SIZES: 0 - 12



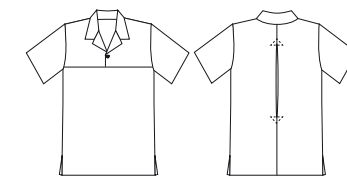
COTTON-RICH POPLIN

Light and fresh cotton-rich fabric.



Cotton-rich Poplin composition:
55% COTTON - 45% POLYESTER

1186 UNISEX SHORT SLEEVED TUNIC



● 000 Black

SIZES: X - 2XL

norvil

**Beauty
and
Healthcare**



7

**HYGIENIC
PRODUCTS**

norvil

norvil **protect**

Norvil Protect is our line of products designed to protect you
and to protect others.
Hygienic products are made of disposable and also reusable
fabrics.

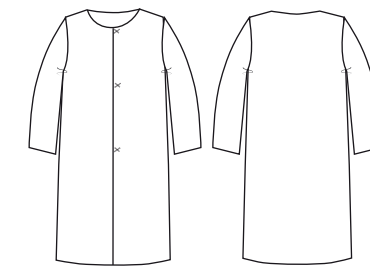


Beauty
and
Healthcare



norvil

BATM04 HYGIENIC GOWN WITH VELCRO CLOSURE



○ 001 White

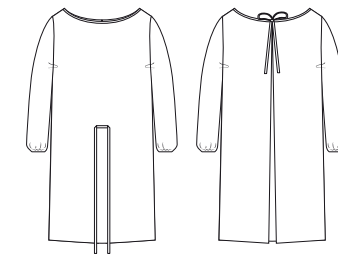
ONE SIZE

TST composition:
100% POLYPROPYLENE





BATM01 HYGIENIC GOWN OPEN BACK



○ 001 White

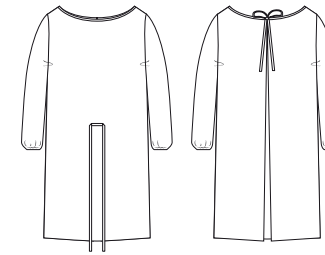
ONE SIZE

TST composition:
100% POLYPROPYLENE





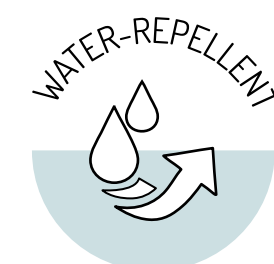
BATM03 HYGIENIC REUSABLE GOWN OPEN BACK



○ 001 White

ONE SIZE

Microfiber composition:
100% POLYESTER



Fabrics are tested according to UNE-EN14683,
UNE0065: 2020 and CEE / 93/42.

Approved by AITEX.

They support up to 25 washes cycles.



— **GORR001** HYGIENIC CAP WITH ELASTIC AROUND THE EDGE

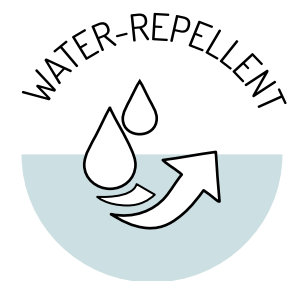


— **MANG01** HYGIENIC SLEEVES WITH ELASTIC CUFF



— **CALZA01** HYGIENIC SHOE COVER WITH ELASTIC AROUND THE EDGE

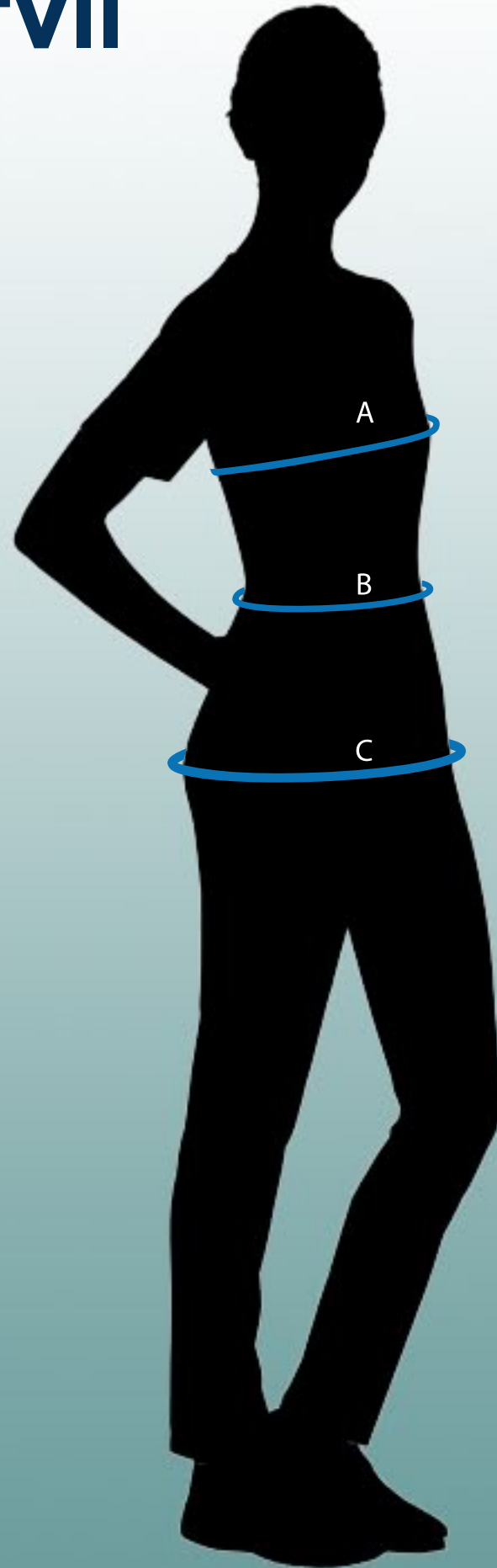
TST composition:
100% POLYPROPYLENE



We can also provide you with a wide range catalogue of hygienic products such as masks, gloves, among others.

CONTACT US!





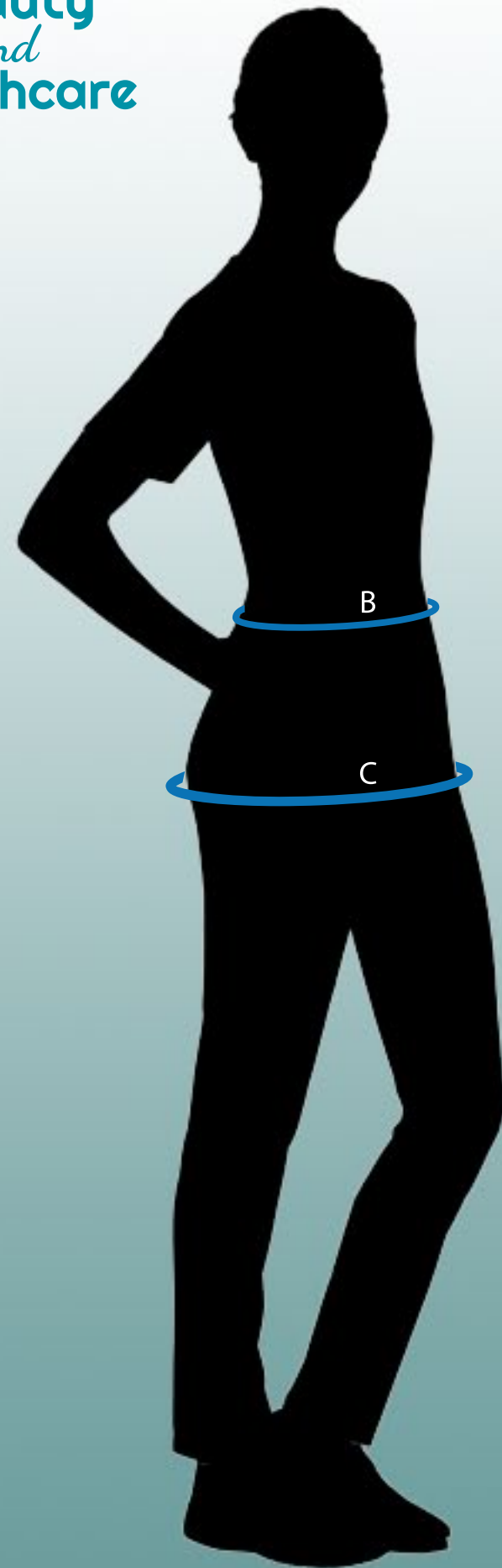
CASACAS y BATAS · Tunics and Coats · Tuniques et Blouses

TALLAS Sizes · Tailles	0		2		4		6		8		10	
	XS		S		M		L		XL		2XL	
A PECHO cm chest · poitrine	78	82	86	90	94	98	102	106	110	114	118	122
B CINTURA cm waist · tour de taille	60	64	68	72	76	80	85	90	95	100	105	110
C CADERA cm hip · tour de bassins	84	88	92	96	100	104	109	114	119	124	129	134

TALLAS INTERNACIONALES · International sizes · Tailles internationales

UK - IRL	6	8	10	12	14	16	18	20	22	24	26	28
Holland - Germany Switzerland - Scandinavia	32	34	36	38	40	42	44	46	48	50	52	54
France - Portugal	34	36	38	40	42	44	46	48	50	52	54	56
Italia	38	40	42	44	46	48	50	52	54	56	58	60
USA - México	4	6	8	10	12	14	16	18	20	22	24	26



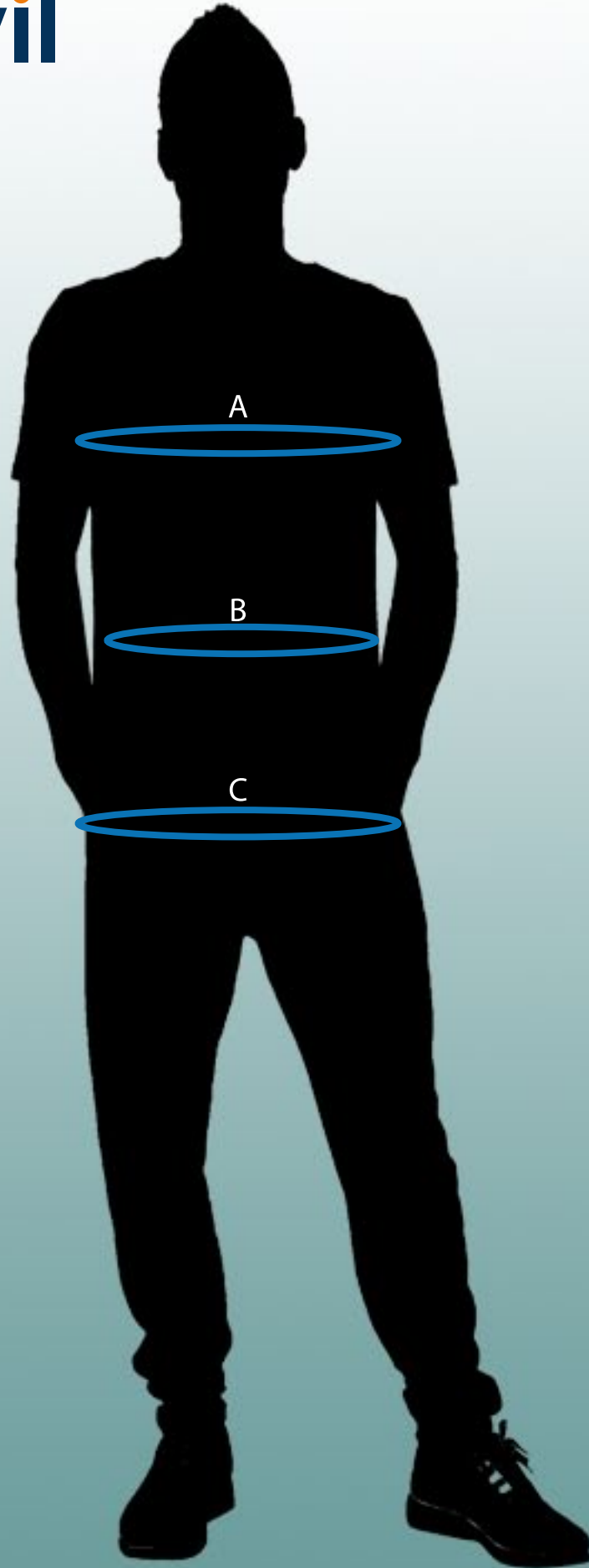


PANTALÓN · Trousers · Pantalon

TALLAS Sizes · Tailles	XS		S		M		L		XL		2XL	
B CINTURA cm waist · tour de taille	60	64	68	72	76	80	85	90	95	100	105	110
C CADERA cm hip · tour de bassins	84	88	92	96	100	104	109	114	119	124	129	134

TALLAS INTERNACIONALES · International sizes · Tailles internationales

UK - IRL	6	8	10	12	14	16	18	20	22	24	26	28
Holland - Germany Switzerland - Scandinavia	32	34	36	38	40	42	44	46	48	50	52	54
France - Portugal	34	36	38	40	42	44	46	48	50	52	54	56
Italia	38	40	42	44	46	48	50	52	54	56	58	60
USA - México	4	6	8	10	12	14	16	18	20	22	24	26

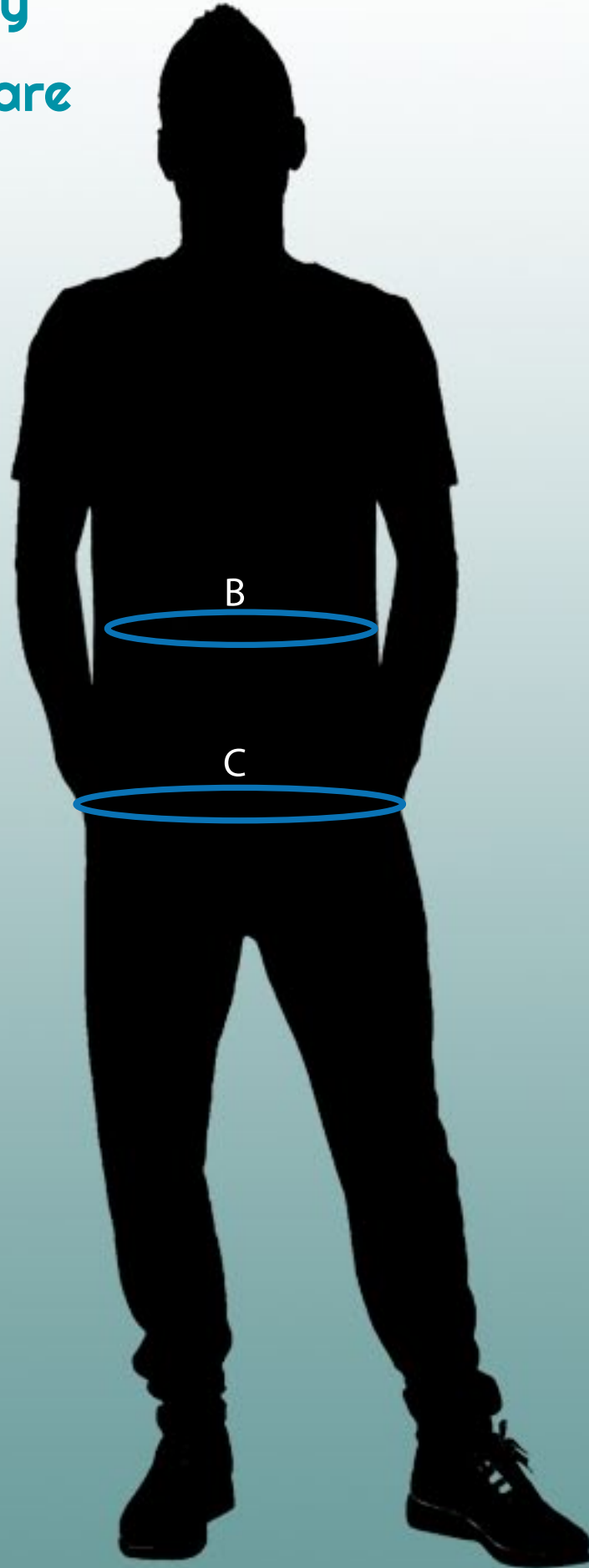


CASACAS y BATAS · Tunics and Coats · Tuniques et Blouses

TALLAS Sizes · Tailles	XS	S	M	L	XL	2XL	3XL	4XL	5XL	
A PECHO cm chest · poitrine	76 - 80	84 - 88	92 - 96	100 - 104	108 - 112	116 - 120	124 - 128	132 - 136	140 - 144	
B CINTURA cm waist · tour de taille	68	72	76	80	84	88	92	96	100	104
C CADERA cm hip · tour de bassins	88	92	96	100	104	108	112	116	120	124

TALLAS INTERNACIONALES · International sizes · Tailles internationales

Tallas europeas European sizes Tailles européennes	35	37	39	41	43	45	46	48	50	52
UK - IRL - USA México	13 3/4	14 1/2	15 1/2	16	17	17 3/4	18	19	19 3/4	20 1/2



PANTALÓN · Trousers · Pantalon

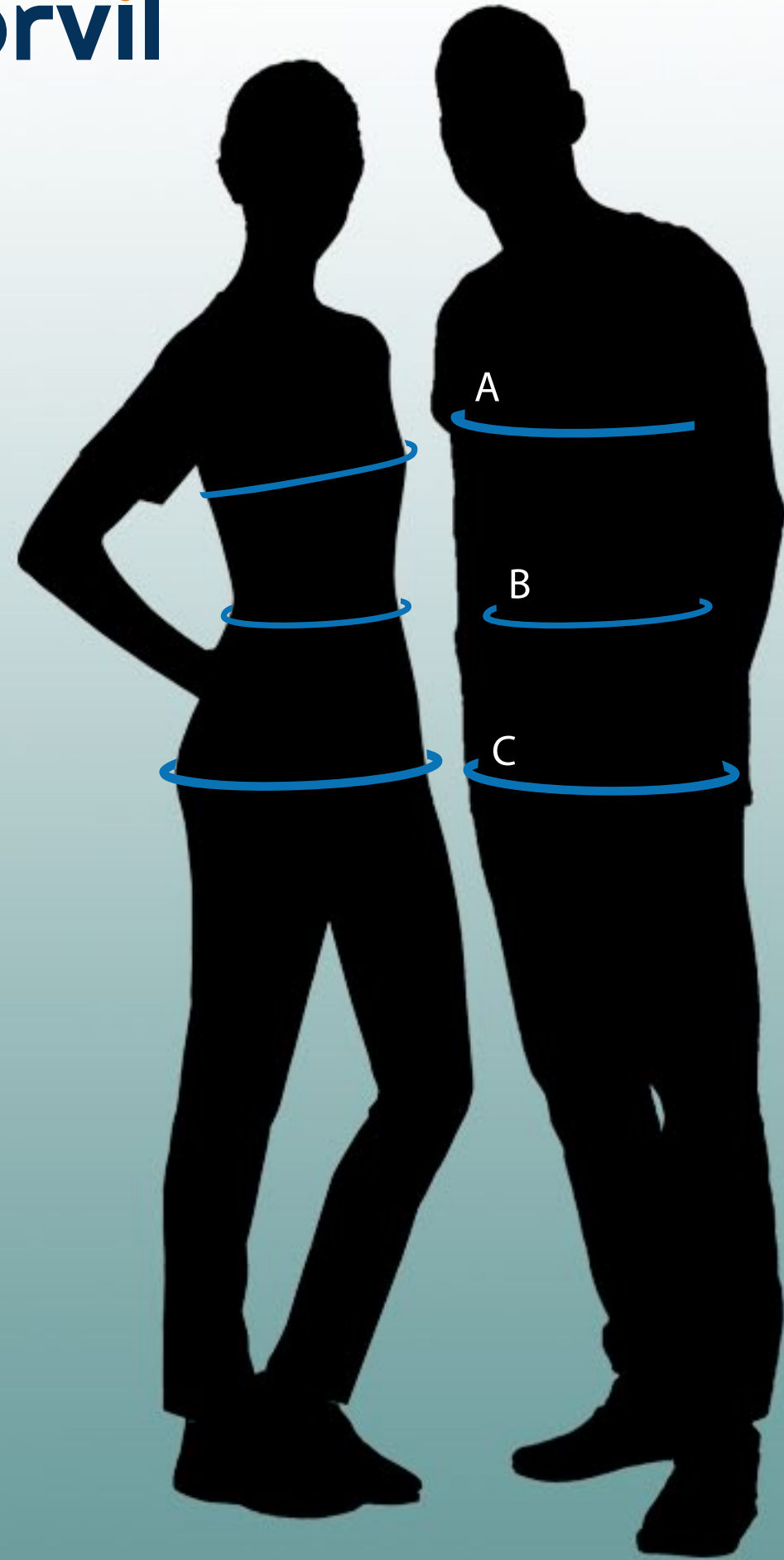
TALLAS Sizes · Tailles	S		M		L		XL		2XL		3XL		4XL	
B CINTURA cm waist · tour de taille	68	72	76	80	84	88	92	96	100	104	108	112	116	120
C CADERA cm hip · tour de bassins	88	92	96	100	104	108	112	116	120	124	128	132	136	140

TALLAS INTERNACIONALES · International sizes · Tailles internationales

Holland Germany Switzerland Scandinavia	40	42	44	46	48	50	52	54	56	58		60	62 - 64	66
France Portugal	34	36	38	40	42	44	46	48	50	52	54	56	58	60
UK - IRL - USA México	24	26	28	30	32	34	36	38	40	42	44	46	48	50
Italia	38	40	42	44	46	48	50	52	54	56	58	60	62	64



SIZE GUIDE · Unisex



CASACAS y BATAS · Tunics and Coats · Tuniques et Blouses

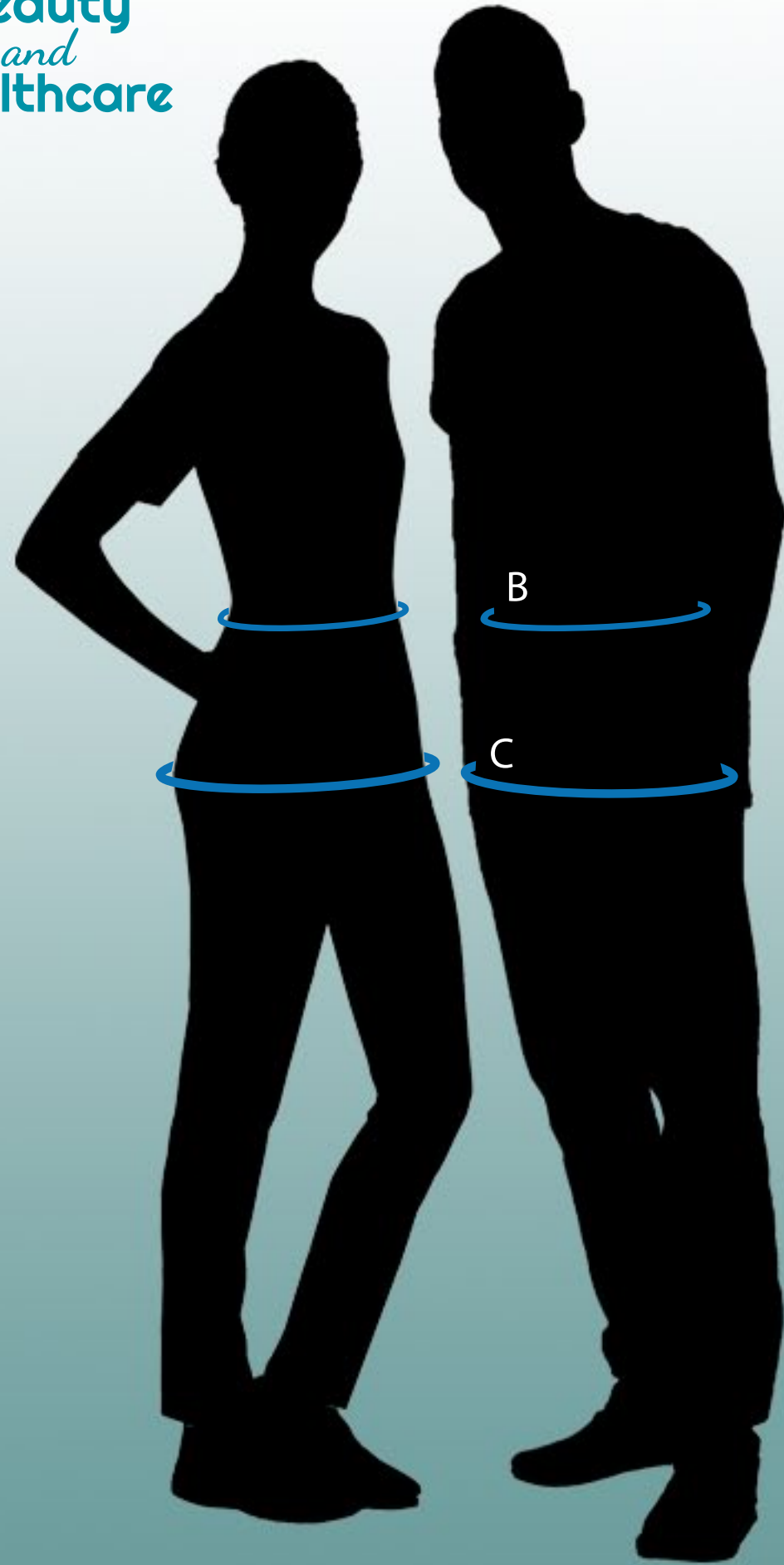
TALLAS Sizes · Tailles	XS	S	M	L	XL	2XL	3XL					
A PECHO cm chest · poitrine	84	88	92	96	100	104	108	112	116	120	124	128
B CINTURA cm waist · tour de taille	68	72	76	80	84	88	92	96	100	104	108	112
C CADERA cm hip · tour de bassins	88	92	96	100	104	108	112	116	120	124	128	132

TALLAS INTERNACIONALES · International sizes · Tailles internationales

UK - IRL - France Portugal - Italia	XS	S	M	L	XL	2XL	3XL
Switzerland Scandinavia	XS		S	M	L	XL	2XL
USA	XXS	XS	S	M	L	XL	2XL
México	EP	P	MX	G	EG	EGG	



SIZE GUIDE · Unisex



PANTALÓN · Trousers · Pantalon

TALLAS Sizes · Tailles	XS	S	M		L		XL		2XL		3XL	
B CINTURA cm waist · tour de taille	68	72	76	80	84	88	92	96	100	104	108	112
C CADERA cm hip · tour de bassins	88	92	96	100	104	108	112	116	120	124	128	132

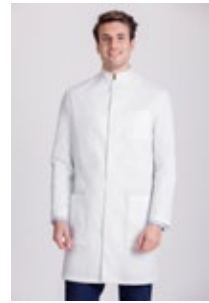
TALLAS INTERNACIONALES · International sizes · Tailles internationales

UK - IRL - France Portugal - Italia	XS	S	M	L	XL	2XL	3XL
Switzerland Scandinavia	XS		S	M	L	XL	2XL
USA	XXS	XS	S	M	L	XL	2XL
México	EP	P	MX	G	EG	EGG	



MODEL LIST

COATS



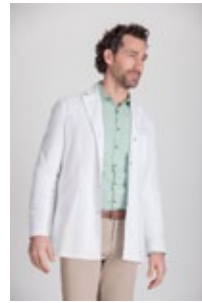
1007

p. 23



1067

p. 24



1005

p. 30



1053

p. 29



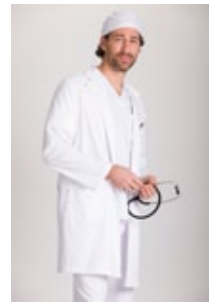
1006

p. 42



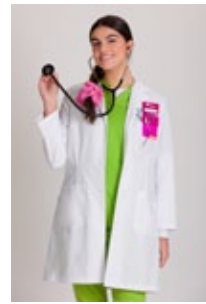
1056

p. 42



1012

p. 47



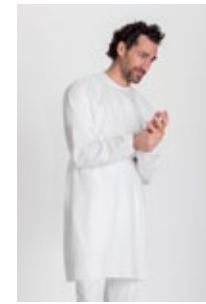
1091

p. 48



BATM01

p. 86



BATM03

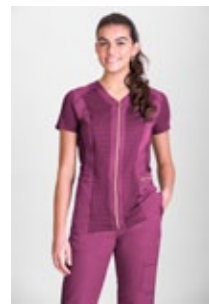
p. 87



BATM04

p. 85

TUNICS



1146

pp. 5 - 6



1149

pp. 7 - 8



1147

p. 9



1728

p. 15



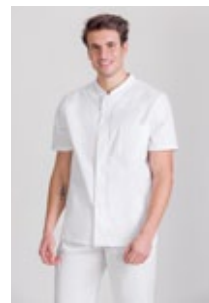
1140

pp. 25 - 26



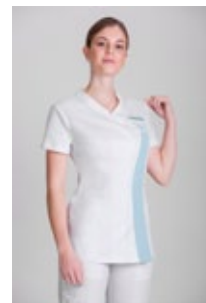
1176

pp. 31 - 32



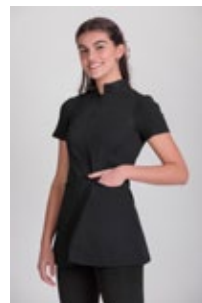
1168

pp. 32 - 33



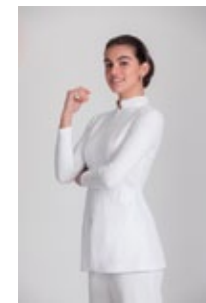
1141

p. 34



1177

pp. 35 - 36



1178

p. 37



1174

p. 39



1144

pp. 40 - 41



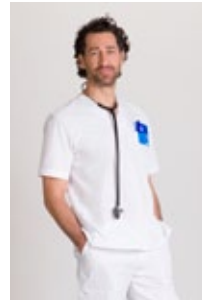
MODEL LIST

TUNICS



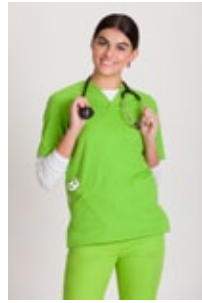
1193

pp. 43 - 44



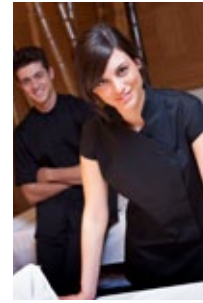
1194

p. 49



1184

pp. 50 - 52



1107

p. 54



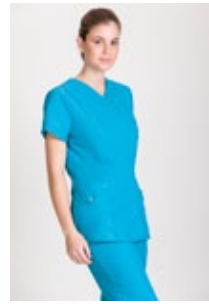
1197

p. 54



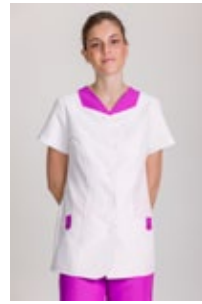
1123

p. 55



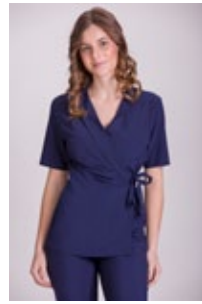
1170

pp. 58 - 61



1172

pp. 62 - 63



1100

pp. 67 - 68



1171

pp. 69 - 70



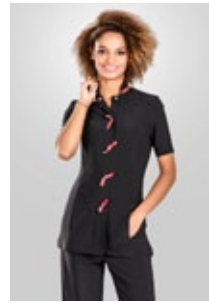
1121

p. 71



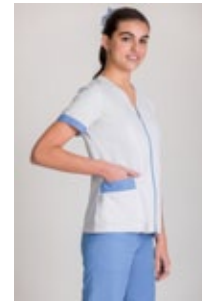
1192

pp. 72 - 73



1142

pp. 72 - 73



1150

pp. 76



1127

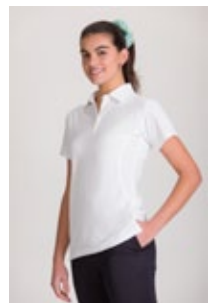
p. 77



1186

p. 78

POLO-SHIRTS and T-SHIRTS



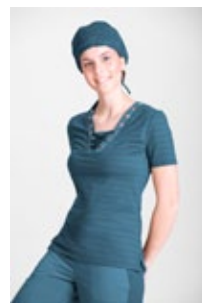
1724

p. 19



1722

p. 20



1739

pp. 10 - 11



1732

p. 16



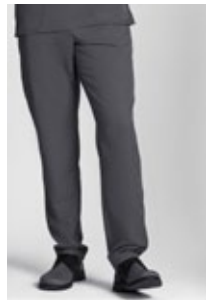
1738

p. 17



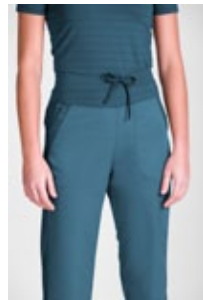
MODEL LIST

TROUSERS



1718

p. 8



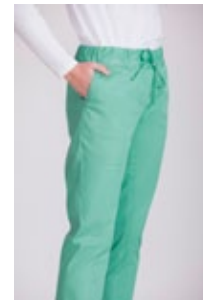
1717

p. 12



1715

p. 18



1709

p. 27



1708

p. 45



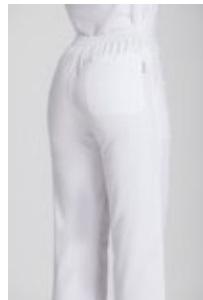
90

p. 53



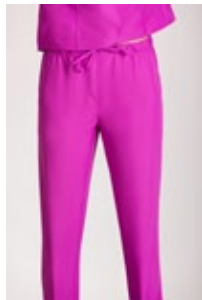
83

p. 56



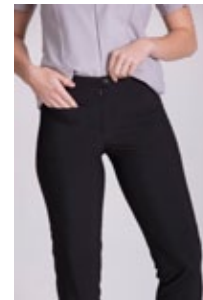
82

p. 56



1719

p. 64



95

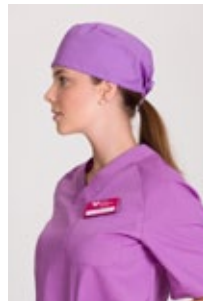
p. 74

CAPS and HYGIENICS



588

p. 47



589

p. 51



593

p. 10



GORR001

p. 84



MANG01

p. 84



CALZA01

p. 84





norvil

siente tu uniforme

Beauty
and
Healthcare

CATALOGUE 2021